

**NXF1 antibody - N-terminal region**  
**Rabbit Polyclonal Antibody**  
**Catalog # AI11775****Specification**

---

**NXF1 antibody - N-terminal region - Product Information**

Application	IHC, WB
Primary Accession	<a href="#">O9UBU9</a>
Other Accession	<a href="#">NM_006362</a> , <a href="#">NP_006353</a>
Reactivity	Human, Mouse, Rat, Bovine, Dog
Predicted	Human, Mouse, Rat, Bovine, Dog
Host	Rabbit
Clonality	Polyclonal
Calculated MW	68kDa KDa

**NXF1 antibody - N-terminal region - Additional Information****Gene ID** 10482**Alias Symbol** TAP, MEX67**Other Names**

Nuclear RNA export factor 1, Tip-associated protein, Tip-associating protein, mRNA export factor TAP, NXF1, TAP

**Format**

Liquid. Purified antibody supplied in 1x PBS buffer with 0.09% (w/v) sodium azide and 2% sucrose.

**Reconstitution & Storage**

Add 100 ul of distilled water. Final anti-NXF1 antibody concentration is 1 mg/ml in PBS buffer with 2% sucrose. For longer periods of storage, store at 20°C. Avoid repeat freeze-thaw cycles.

**Precautions**

NXF1 antibody - N-terminal region is for research use only and not for use in diagnostic or therapeutic procedures.

**NXF1 antibody - N-terminal region - Protein Information****Name** NXF1**Synonyms** TAP**Function**

Involved in the nuclear export of mRNA species bearing retroviral constitutive transport elements (CTE) and in the export of mRNA from the nucleus to the cytoplasm (TAP/NFX1 pathway) (PubMed:<a href="http://www.uniprot.org/citations/10924507" target="\_blank">10924507</a>).

The NXF1-NXT1 heterodimer is involved in the export of HSP70 mRNA in conjunction with ALYREF/THOC4 and THOC5 components of the TREX complex (PubMed:<a href="http://www.uniprot.org/citations/18364396" target="\_blank">18364396</a>, PubMed:<a href="http://www.uniprot.org/citations/18364396" target="\_blank">18364396</a>).

href="http://www.uniprot.org/citations/19165146" target="\_blank">19165146</a>, PubMed:<a href="http://www.uniprot.org/citations/9660949" target="\_blank">9660949</a>).  
ALYREF/THOC4-bound mRNA is thought to be transferred to the NXF1-NXT1 heterodimer for export (PubMed:<a href="http://www.uniprot.org/citations/18364396" target="\_blank">18364396</a>, PubMed:<a href="http://www.uniprot.org/citations/19165146" target="\_blank">19165146</a>, PubMed:<a href="http://www.uniprot.org/citations/9660949" target="\_blank">9660949</a>).  
Also involved in nuclear export of m6A-containing mRNAs: interaction between SRSF3 and YTHDC1 facilitates m6A-containing mRNA-binding to both SRSF3 and NXF1, promoting mRNA nuclear export (PubMed:<a href="http://www.uniprot.org/citations/28984244" target="\_blank">28984244</a>).

### Cellular Location

Nucleus. Nucleus, nucleoplasm Nucleus speckle. Nucleus, nuclear pore complex. Nucleus envelope. Cytoplasm. Cytoplasm, Stress granule. Note=Localized predominantly in the nucleoplasm and at both the nucleoplasmic and cytoplasmic faces of the nuclear pore complex. Shuttles between the nucleus and the cytoplasm. Travels to the cytoplasm as part of the exon junction complex (EJC) bound to mRNA. The association with the TREX complex seems to occur in regions surrounding nuclear speckles known as perispeckles (PubMed:23826332). Nucleus; nuclear rim (PubMed:25662211)

### Tissue Location

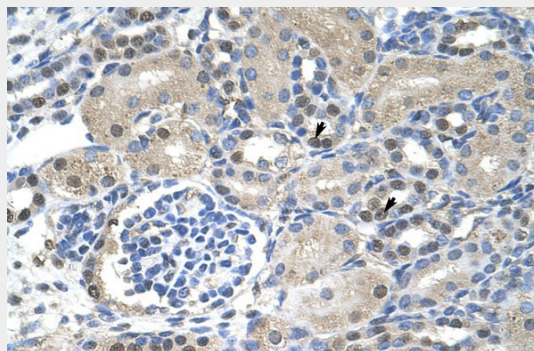
Expressed ubiquitously.

### NXF1 antibody - N-terminal region - Protocols

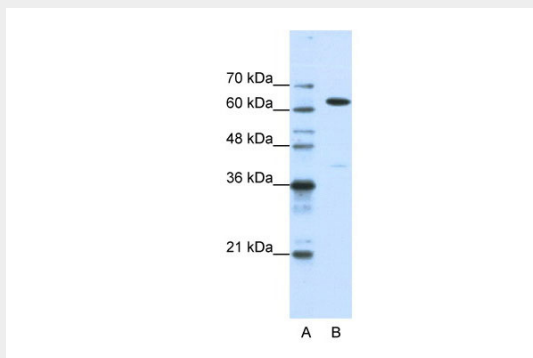
Provided below are standard protocols that you may find useful for product applications.

- [Western Blot](#)
- [Blocking Peptides](#)
- [Dot Blot](#)
- [Immunohistochemistry](#)
- [Immunofluorescence](#)
- [Immunoprecipitation](#)
- [Flow Cytometry](#)
- [Cell Culture](#)

### NXF1 antibody - N-terminal region - Images



Rabbit Anti-NXF1Antibody  
Paraffin Embedded Tissue: Human Kidney  
Cellular Data: Epithelial cells of renal tubule  
Antibody Concentration: 4.0-8.0 µg/ml  
Magnification: 400X



WB Suggested Anti-NXF1 Antibody Titration: 1.25µg/ml

Positive Control: HepG2 cell lysate

NXF1 is supported by BioGPS gene expression data to be expressed in HepG2

#### **NXF1 antibody - N-terminal region - References**

Chen, I.H., (2005) J. Virol. 79 (7), 3949-3961  
Reconstitution and Storage: For short term use, store at 2-8°C up to 1 week. For long term storage, store at -20°C in small aliquots to prevent freeze-thaw cycles.