

**CPSF1 antibody - middle region**  
**Rabbit Polyclonal Antibody**  
**Catalog # AI11791****Specification**

---

**CPSF1 antibody - middle region - Product Information**

Application	WB
Primary Accession	<a href="#">Q10570</a>
Other Accession	<a href="#">NM_013291</a> , <a href="#">NP_037423</a>
Reactivity	Human, Rat, Horse
Predicted	Human, Horse
Host	Rabbit
Clonality	Polyclonal
Calculated MW	161kDa KDa

**CPSF1 antibody - middle region - Additional Information****Gene ID** 29894**Alias Symbol** CPSF160, HSU37012, P/cl.18**Other Names**

Cleavage and polyadenylation specificity factor subunit 1, Cleavage and polyadenylation specificity factor 160 kDa subunit, CPSF 160 kDa subunit, CPSF1, CPSF160

**Format**

Liquid. Purified antibody supplied in 1x PBS buffer with 0.09% (w/v) sodium azide and 2% sucrose.

**Reconstitution & Storage**

Add 50 ul of distilled water. Final anti-CPSF1 antibody concentration is 1 mg/ml in PBS buffer with 2% sucrose. For longer periods of storage, store at 20°C. Avoid repeat freeze-thaw cycles.

**Precautions**

CPSF1 antibody - middle region is for research use only and not for use in diagnostic or therapeutic procedures.

**CPSF1 antibody - middle region - Protein Information****Name** CPSF1**Synonyms** CPSF160**Function**

Component of the cleavage and polyadenylation specificity factor (CPSF) complex that plays a key role in pre-mRNA 3'-end formation, recognizing the AAUAAA signal sequence and interacting with poly(A) polymerase and other factors to bring about cleavage and poly(A) addition. This subunit is involved in the RNA recognition step of the polyadenylation reaction (PubMed:&lt;a href="http://www.uniprot.org/citations/14749727" target="\_blank"&gt;14749727&lt;/a&gt;). May play a role in eye morphogenesis and the development of retinal ganglion cell projections to the midbrain

(By similarity).

**Cellular Location**

Nucleus, nucleoplasm.

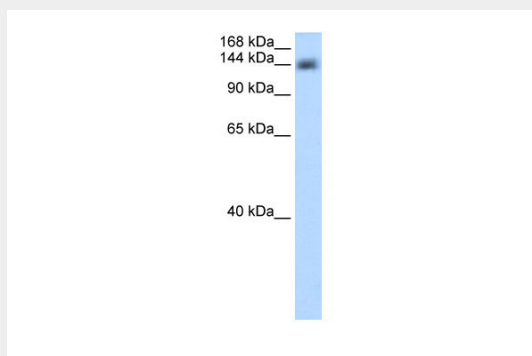
**Tissue Location**

Widely expressed, with high expression in the retina.

**CPSF1 antibody - middle region - Protocols**

Provided below are standard protocols that you may find useful for product applications.

- [Western Blot](#)
- [Blocking Peptides](#)
- [Dot Blot](#)
- [Immunohistochemistry](#)
- [Immunofluorescence](#)
- [Immunoprecipitation](#)
- [Flow Cytometry](#)
- [Cell Culture](#)

**CPSF1 antibody - middle region - Images**

WB Suggested Anti-CPSF1 Antibody Titration: 0.2-1 µg/ml

ELISA Titer: 1:62500

Positive Control: Transfected 293T

**CPSF1 antibody - middle region - References**

Beausoleil, S.A., (2004) Proc. Natl. Acad. Sci. U.S.A. 101 (33), 12130-12135  
Reconstitution and Storage: For short term use, store at 2-8°C up to 1 week. For long term storage, store at -20°C in small aliquots to prevent freeze-thaw cycles.