

**Scaf8 antibody - C-terminal region**  
**Rabbit Polyclonal Antibody**  
**Catalog # AI11796****Specification**

---

**Scaf8 antibody - C-terminal region - Product Information**

Application	WB
Primary Accession	<a href="#">Q6DID3</a>
Other Accession	<a href="#">NM_134123</a> , <a href="#">NP_598884</a>
Reactivity	Human, Mouse, Rat, Rabbit, Zebrafish, Pig, Horse, Bovine, Dog
Predicted	Human, Mouse, Rat, Rabbit, Pig, Chicken, Horse, Bovine
Host	Rabbit
Clonality	Polyclonal
Calculated MW	139kDa KDa

**Scaf8 antibody - C-terminal region - Additional Information****Gene ID** 106583**Alias Symbol** A630086M08Rik, A930036P18Rik, AA408306, AI447644, AI448652, AU015035, KIAA1116, mKIAA1116, Rbm16**Other Names**

Protein SCAF8, RNA-binding motif protein 16, SR-related and CTD-associated factor 8, Scaf8, Kiaa1116, Rbm16

**Format**

Liquid. Purified antibody supplied in 1x PBS buffer with 0.09% (w/v) sodium azide and 2% sucrose.

**Reconstitution & Storage**

Add 50 ul of distilled water. Final anti-Scaf8 antibody concentration is 1 mg/ml in PBS buffer with 2% sucrose. For longer periods of storage, store at 20°C. Avoid repeat freeze-thaw cycles.

**Precautions**

Scaf8 antibody - C-terminal region is for research use only and not for use in diagnostic or therapeutic procedures.

**Scaf8 antibody - C-terminal region - Protein Information****Name** Scaf8 {ECO:0000312|MGI:MGI:1925212}**Function**

Anti-terminator protein required to prevent early mRNA termination during transcription. Together with SCAF4, acts by suppressing the use of early, alternative poly(A) sites, thereby preventing the accumulation of non-functional truncated proteins. Mechanistically, associates with the phosphorylated C-terminal heptapeptide repeat domain (CTD) of the largest RNA polymerase II

subunit (POLR2A), and subsequently binds nascent RNA upstream of early polyadenylation sites to prevent premature mRNA transcript cleavage and polyadenylation. Independently of SCAF4, also acts as a positive regulator of transcript elongation.

#### **Cellular Location**

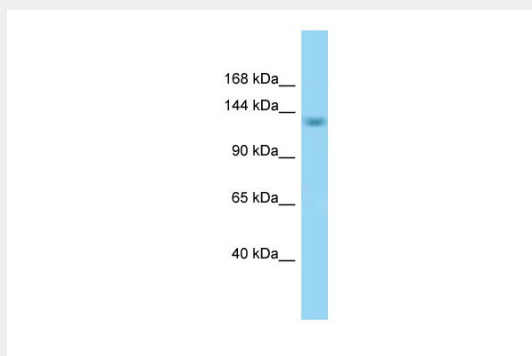
Nucleus. Nucleus matrix. Note=Detected in granular nuclear foci which correspond to sites of active transcription {ECO:0000250|UniProtKB:Q9UPN6}

#### **Scaf8 antibody - C-terminal region - Protocols**

Provided below are standard protocols that you may find useful for product applications.

- [Western Blot](#)
- [Blocking Peptides](#)
- [Dot Blot](#)
- [Immunohistochemistry](#)
- [Immunofluorescence](#)
- [Immunoprecipitation](#)
- [Flow Cytometry](#)
- [Cell Culture](#)

#### **Scaf8 antibody - C-terminal region - Images**



WB Suggested Anti-Scaf8 Antibody Titration: 1.0 µg/ml  
Positive Control: Mouse Kidney