

**Fnbp1 antibody - N-terminal region**  
**Rabbit Polyclonal Antibody**  
**Catalog # AI11798****Specification**

---

**Fnbp1 antibody - N-terminal region - Product Information**

Application	WB
Primary Accession	<a href="#">Q80TY0</a>
Other Accession	<a href="#">NM_001177650</a> , <a href="#">NP_001171121</a>
Reactivity	Human, Mouse, Rat, Rabbit, Zebrafish, Horse, Bovine, Dog
Predicted Host	Human, Mouse, Rat, Chicken, Bovine
Clonality	Rabbit
Calculated MW	Polyclonal 57kDa KDa

**Fnbp1 antibody - N-terminal region - Additional Information****Gene ID** 14269**Alias Symbol** **1110057E06Rik, 2210010H06Rik, FBP1, Fbp17****Other Names**

Formin-binding protein 1, Formin-binding protein 17, Fnbp1, Fbp17, Kiaa0554

**Format**

Liquid. Purified antibody supplied in 1x PBS buffer with 0.09% (w/v) sodium azide and 2% sucrose.

**Reconstitution & Storage**

Add 50 ul of distilled water. Final anti-Fnbp1 antibody concentration is 1 mg/ml in PBS buffer with 2% sucrose. For longer periods of storage, store at 20°C. Avoid repeat freeze-thaw cycles.

**Precautions**

Fnbp1 antibody - N-terminal region is for research use only and not for use in diagnostic or therapeutic procedures.

**Fnbp1 antibody - N-terminal region - Protein Information****Name** Fnbp1**Synonyms** Fbp17, Kiaa0554**Function**

Required to coordinate membrane tubulation with reorganization of the actin cytoskeleton during the late stage of clathrin-mediated endocytosis. Binds to lipids such as phosphatidylinositol 4,5-bisphosphate and phosphatidylserine and promotes membrane invagination and the formation of tubules. Also enhances actin polymerization via the recruitment of WASL/N-WASP, which in turn activates the Arp2/3 complex. Actin polymerization may promote the fission of membrane tubules

to form endocytic vesicles. May act as a link between RND2 signaling and regulation of the actin cytoskeleton. May be required for the lysosomal retention of FASLG/FASL (By similarity).

**Cellular Location**

Cytoplasm. Cytoplasm, cytoskeleton. Cytoplasm, cell cortex. Lysosome. Cytoplasmic vesicle. Cell membrane; Peripheral membrane protein; Cytoplasmic side. Membrane, clathrin-coated pit  
Note=Enriched in cortical regions coincident with F-actin. Also localizes to endocytic vesicles and lysosomes.

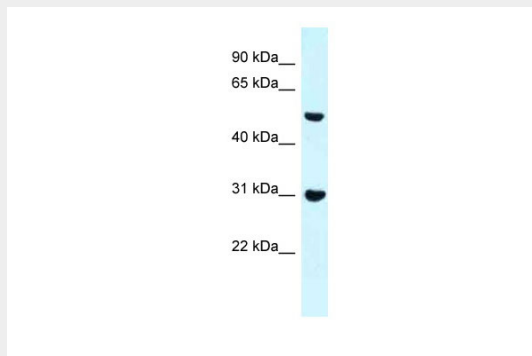
**Tissue Location**

Expressed in brain and testis.

**Fnbp1 antibody - N-terminal region - Protocols**

Provided below are standard protocols that you may find useful for product applications.

- [Western Blot](#)
- [Blocking Peptides](#)
- [Dot Blot](#)
- [Immunohistochemistry](#)
- [Immunofluorescence](#)
- [Immunoprecipitation](#)
- [Flow Cytometry](#)
- [Cell Culture](#)

**Fnbp1 antibody - N-terminal region - Images**

WB Suggested Anti-Fnbp1 Antibody Titration: 1.0 µg/ml  
Positive Control: Mouse Pancreas