

BRUNOL4 antibody - middle region
Rabbit Polyclonal Antibody
Catalog # AI11821**Specification**

BRUNOL4 antibody - middle region - Product Information

Application	WB
Primary Accession	O9BZC1
Other Accession	NM_020180 , NP_064565
Reactivity	Human, Mouse, Rat, Rabbit, Zebrafish, Pig, Horse, Bovine
Predicted Host	Human
Clonality	Rabbit
Calculated MW	Polyclonal 52kDa KDa

BRUNOL4 antibody - middle region - Additional Information**Gene ID** 56853**Alias Symbol** **BRUNOL-4, CELF4, BRUNOL4****Other Names**

CUGBP Elav-like family member 4, CELF-4, Bruno-like protein 4, CUG-BP- and ETR-3-like factor 4, RNA-binding protein BRUNOL-4, CELF4, BRUNOL4

Format

Liquid. Purified antibody supplied in 1x PBS buffer with 0.09% (w/v) sodium azide and 2% sucrose.

Reconstitution & Storage

Add 50 ul of distilled water. Final anti-BRUNOL4 antibody concentration is 1 mg/ml in PBS buffer with 2% sucrose. For longer periods of storage, store at 20°C. Avoid repeat freeze-thaw cycles.

Precautions

BRUNOL4 antibody - middle region is for research use only and not for use in diagnostic or therapeutic procedures.

BRUNOL4 antibody - middle region - Protein Information**Name** CELF4**Synonyms** BRUNOL4**Function**

RNA-binding protein implicated in the regulation of pre-mRNA alternative splicing. Mediates exon inclusion and/or exclusion in pre-mRNA that are subject to tissue-specific and developmentally regulated alternative splicing. Specifically activates exon 5 inclusion of cardiac isoforms of TNNT2 during heart remodeling at the juvenile to adult transition. Promotes exclusion of both the smooth muscle (SM) and non-muscle (NM) exons in actinin pre-mRNAs. Activates the splicing of MAPT/Tau

exon 10. Binds to muscle-specific splicing enhancer (MSE) intronic sites flanking the alternative exon 5 of TNNT2 pre-mRNA.

Cellular Location

Nucleus. Cytoplasm

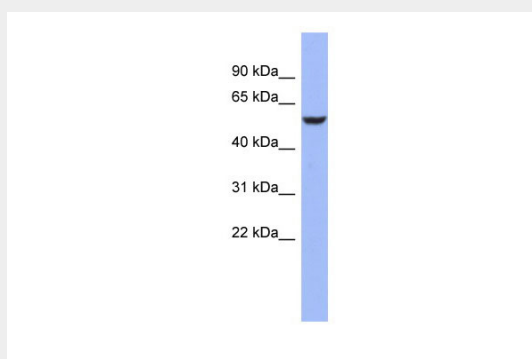
Tissue Location

Ubiquitous. Strongly expressed in the cerebellum, hippocampus, amygdala, temporal and frontal cortex and frontal lobes

BRUNOL4 antibody - middle region - Protocols

Provided below are standard protocols that you may find useful for product applications.

- [Western Blot](#)
- [Blocking Peptides](#)
- [Dot Blot](#)
- [Immunohistochemistry](#)
- [Immunofluorescence](#)
- [Immunoprecipitation](#)
- [Flow Cytometry](#)
- [Cell Culture](#)

BRUNOL4 antibody - middle region - Images

WB Suggested Anti-BRUNOL4 Antibody Titration: 0.2-1 µg/ml

ELISA Titer: 1:312500

Positive Control: OVCAR-3 cell lysate

BRUNOL4 antibody - middle region - References

Szafranski, K., Genome Biol. 8 (8), R154 (2007) Reconstitution and Storage: For short term use, store at 2-8°C up to 1 week. For long term storage, store at -20°C in small aliquots to prevent freeze-thaw cycles.