

**PTBP2 antibody - N-terminal region**  
**Rabbit Polyclonal Antibody**  
**Catalog # AI11831****Specification**

---

**PTBP2 antibody - N-terminal region - Product Information**

|                   |  |
|-------------------|--|
| Application       | WB   |
| Primary Accession | <a href="#">O9UKA9</a>                                   |
| Other Accession   | <a href="#">NM_021190</a> , <a href="#">NP_067013</a>    |
| Reactivity        | Human, Mouse, Rat, Rabbit, Zebrafish, Horse, Bovine, Dog |
| Predicted         | Human, Mouse, Rat, Rabbit, Zebrafish, Chicken, Bovine    |
| Host              | Rabbit   |
| Clonality         | Polyclonal   |
| Calculated MW     | 57kDa KDa  |

**PTBP2 antibody - N-terminal region - Additional Information****Gene ID** 58155**Alias Symbol** [FLJ34897](#), [MIBP](#), [PTB](#), [PTBLP](#), [brPTB](#), [nPTB](#), [nPTB5](#), [nPTB6](#), [nPTB7](#), [nPTB8](#)**Other Names**

Polypyrimidine tract-binding protein 2, Neural polypyrimidine tract-binding protein, Neurally-enriched homolog of PTB, PTB-like protein, PTBP2, NPTB, PTB, PTBLP

**Format**

Liquid. Purified antibody supplied in 1x PBS buffer with 0.09% (w/v) sodium azide and 2% sucrose.

**Reconstitution & Storage**

Add 50 ul of distilled water. Final anti-PTBP2 antibody concentration is 1 mg/ml in PBS buffer with 2% sucrose. For longer periods of storage, store at 20°C. Avoid repeat freeze-thaw cycles.

**Precautions**

PTBP2 antibody - N-terminal region is for research use only and not for use in diagnostic or therapeutic procedures.

**PTBP2 antibody - N-terminal region - Protein Information****Name** PTBP2 ([HGNC:17662](#))**Synonyms** NPTB, PTB, PTBLP**Function**

RNA-binding protein which binds to intronic polypyrimidine tracts and mediates negative regulation of exons splicing. May antagonize in a tissue-specific manner the ability of NOVA1 to activate exon selection. In addition to its function in pre-mRNA splicing, plays also a role in the

regulation of translation.

**Cellular Location**

Nucleus {ECO:0000250|UniProtKB:Q91Z31}.

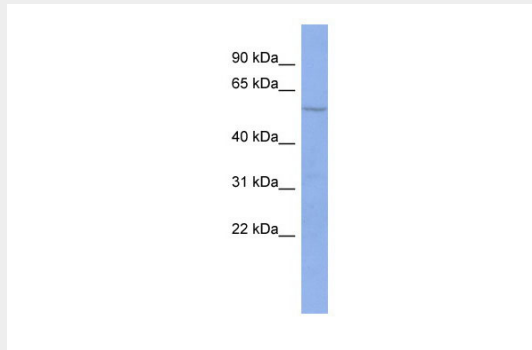
**Tissue Location**

Mainly expressed in brain although also detected in other tissues like heart and skeletal muscle. Isoform 1 and isoform 2 are specifically expressed in neuronal tissues. Isoform 3 and isoform 4 are expressed in non-neuronal tissues. Isoform 5 and isoform 6 are truncated forms expressed in non-neuronal tissues

**PTBP2 antibody - N-terminal region - Protocols**

Provided below are standard protocols that you may find useful for product applications.

- [Western Blot](#)
- [Blocking Peptides](#)
- [Dot Blot](#)
- [Immunohistochemistry](#)
- [Immunofluorescence](#)
- [Immunoprecipitation](#)
- [Flow Cytometry](#)
- [Cell Culture](#)

**PTBP2 antibody - N-terminal region - Images**

WB Suggested Anti-PTBP2 Antibody Titration: 0.2-1 µg/ml

ELISA Titer: 1:62500

Positive Control: PANC1 cell lysate

**PTBP2 antibody - N-terminal region - References**

Galban,S., (2008) Mol. Cell. Biol. 28 (1), 93-107 Reconstitution and Storage:For short term use, store at 2-8C up to 1 week. For long term storage, store at -20C in small aliquots to prevent freeze-thaw cycles.