

Masp2 antibody - middle region
Rabbit Polyclonal Antibody
Catalog # AI11910**Specification**

Masp2 antibody - middle region - Product Information

Application	WB
Primary Accession	O91WP0
Other Accession	NM_001003893 , NP_001003893
Reactivity	Human, Mouse, Rat, Zebrafish, Pig, Horse, Bovine
Predicted	Human, Mouse, Rat, Chicken, Horse, Bovine
Host	Rabbit
Clonality	Polyclonal
Calculated MW	75kDa KDa

Masp2 antibody - middle region - Additional Information**Gene ID** 17175**Alias Symbol** MASP-2, MAp19**Other Names**

Mannan-binding lectin serine protease 2, 3.4.21.104, MBL-associated serine protease 2, Mannose-binding protein-associated serine protease 2, MASP-2, Mannan-binding lectin serine protease 2 A chain, Mannan-binding lectin serine protease 2 B chain, Masp2

Format

Liquid. Purified antibody supplied in 1x PBS buffer with 0.09% (w/v) sodium azide and 2% sucrose.

Reconstitution & Storage

Add 50 ul of distilled water. Final anti-Masp2 antibody concentration is 1 mg/ml in PBS buffer with 2% sucrose. For longer periods of storage, store at 20°C. Avoid repeat freeze-thaw cycles.

Precautions

Masp2 antibody - middle region is for research use only and not for use in diagnostic or therapeutic procedures.

Masp2 antibody - middle region - Protein Information**Name** Masp2**Function**

Serum protease that plays an important role in the activation of the complement system via mannose-binding lectin. After activation by auto-catalytic cleavage it cleaves C2 and C4, leading to their activation and to the formation of C3 convertase (By similarity).

Cellular Location

Secreted.

Tissue Location

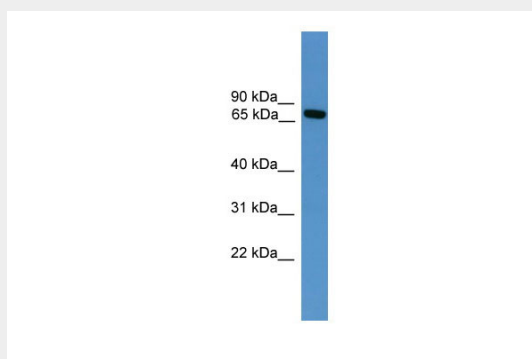
Plasma.

Masp2 antibody - middle region - Protocols

Provided below are standard protocols that you may find useful for product applications.

- [Western Blot](#)
- [Blocking Peptides](#)
- [Dot Blot](#)
- [Immunohistochemistry](#)
- [Immunofluorescence](#)
- [Immunoprecipitation](#)
- [Flow Cytometry](#)
- [Cell Culture](#)

Masp2 antibody - middle region - Images



WB Suggested Anti-Masp2 Antibody Titration: 0.2-1 μ g/ml

ELISA Titer: 1:62500

Positive Control: Mouse Heart