

**CYB561 antibody - middle region**  
**Rabbit Polyclonal Antibody**  
**Catalog # AI11966****Specification**

---

**CYB561 antibody - middle region - Product Information**

Application	WB
Primary Accession	<a href="#">P49447</a>
Other Accession	<a href="#">NM_001915</a> , <a href="#">NP_001906</a>
Reactivity	Human, Mouse, Rat, Rabbit, Pig, Sheep, Horse, Bovine, Dog
Predicted Host	Mouse, Rat, Rabbit, Pig
Clonality	Rabbit
Calculated MW	Polyclonal 27kDa KDa

**CYB561 antibody - middle region - Additional Information****Gene ID** 1534

Alias Symbol	<b>FRRS2</b>
<b>Other Names</b>	
Cytochrome b561, Cytochrome b-561, CYB561	

**Format**

Liquid. Purified antibody supplied in 1x PBS buffer with 0.09% (w/v) sodium azide and 2% sucrose.

**Reconstitution & Storage**

Add 50 ul of distilled water. Final anti-CYB561 antibody concentration is 1 mg/ml in PBS buffer with 2% sucrose. For longer periods of storage, store at 20°C. Avoid repeat freeze-thaw cycles.

**Precautions**

CYB561 antibody - middle region is for research use only and not for use in diagnostic or therapeutic procedures.

**CYB561 antibody - middle region - Protein Information****Name** CYB561 ([HGNC:2571](#))**Function**

Transmembrane reductase that uses ascorbate as an electron donor in the cytoplasm and transfers electrons across membranes to reduce monodehydro-L-ascorbate radical in the lumen of secretory vesicles. It is therefore involved the regeneration and homeostasis within secretory vesicles of ascorbate which in turn provides reducing equivalents needed to support the activity of intravesicular enzymes.

**Cellular Location**

Cytoplasmic vesicle, secretory vesicle, chromaffin granule membrane

{ECO:0000250|UniProtKB:P10897}; Multi-pass membrane protein  
{ECO:0000250|UniProtKB:Q53TN4}. Note=Secretory vesicle containing catecholamines and amidated peptides {ECO:0000250|UniProtKB:P10897}

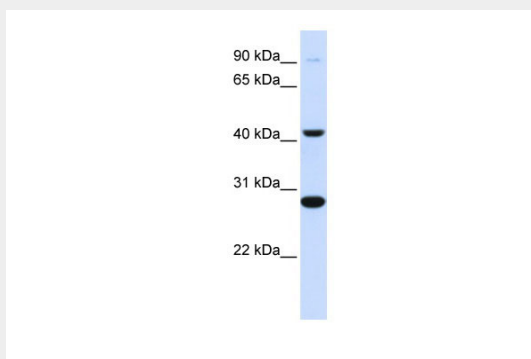
**Tissue Location**

Expressed in many tissues, in particular the brain especially in the cortex and hippocampus

**CYB561 antibody - middle region - Protocols**

Provided below are standard protocols that you may find useful for product applications.

- [Western Blot](#)
- [Blocking Peptides](#)
- [Dot Blot](#)
- [Immunohistochemistry](#)
- [Immunofluorescence](#)
- [Immunoprecipitation](#)
- [Flow Cytometry](#)
- [Cell Culture](#)

**CYB561 antibody - middle region - Images**

WB Suggested Anti-CYB561 Antibody Titration: 0.2-1 µg/ml

ELISA Titer: 1:12500

Positive Control: Human Muscle

**CYB561 antibody - middle region - References**

Fung, M.M., (2008) Circulation 117 (4), 517-525 Reconstitution and Storage: For short term use, store at 2-8°C up to 1 week. For long term storage, store at -20°C in small aliquots to prevent freeze-thaw cycles.