

Cbr2 Antibody - N-terminal region
Rabbit Polyclonal Antibody
Catalog # AI12022**Specification**

Cbr2 Antibody - N-terminal region - Product Information

Application	WB
Primary Accession	P08074
Other Accession	NM_007621 , NP_031647
Reactivity	Human, Mouse, Rat, Horse, Bovine, Dog
Predicted	Human, Rat, Pig, Bovine, Dog
Host	Rabbit
Clonality	Polyclonal
Calculated MW	26kDa KDa

Cbr2 Antibody - N-terminal region - Additional Information**Gene ID** 12409**Alias Symbol** MLCR**Other Names**

Carbonyl reductase [NADPH] 2, 1.1.1.184, Adipocyte protein P27, AP27, Lung carbonyl reductase, LCR, NADPH-dependent carbonyl reductase 2, Cbr2

Format

Liquid. Purified antibody supplied in 1x PBS buffer with 0.09% (w/v) sodium azide and 2% sucrose.

Reconstitution & Storage

Add 50 ul of distilled water. Final anti-Cbr2 antibody concentration is 1 mg/ml in PBS buffer with 2% sucrose. For longer periods of storage, store at 20°C. Avoid repeat freeze-thaw cycles.

Precautions

Cbr2 Antibody - N-terminal region is for research use only and not for use in diagnostic or therapeutic procedures.

Cbr2 Antibody - N-terminal region - Protein Information**Name** Cbr2**Function**

May function in the pulmonary metabolism of endogenous carbonyl compounds, such as aliphatic aldehydes and ketones derived from lipid peroxidation, 3-ketosteroids and fatty aldehydes, as well as in xenobiotic metabolism.

Cellular Location

Mitochondrion matrix

Tissue Location

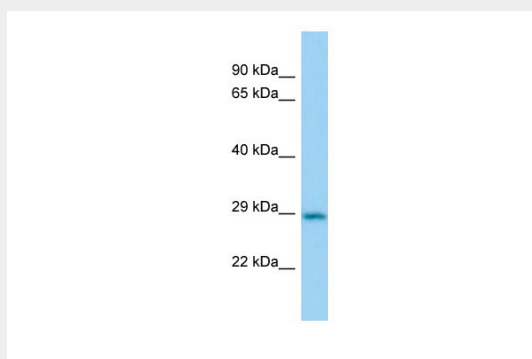
Predominantly expressed in lung, in ciliated cells, non-ciliated bronchiolar cells and type-II alveolar pneumocytes (PubMed:7705352, PubMed:8040004). Also detected in adipose tissue (at protein level) (PubMed:7705352). Low expression in testis, heart, kidney, spleen, brain and liver (PubMed:7705352)

Cbr2 Antibody - N-terminal region - Protocols

Provided below are standard protocols that you may find useful for product applications.

- [Western Blot](#)
- [Blocking Peptides](#)
- [Dot Blot](#)
- [Immunohistochemistry](#)
- [Immunofluorescence](#)
- [Immunoprecipitation](#)
- [Flow Cytometry](#)
- [Cell Culture](#)

Cbr2 Antibody - N-terminal region - Images



Host: Rabbit
Target Name: Cbr2
Sample Tissue: Mouse Lung lysates
Antibody Dilution: 1.0µg/ml