

Zfp445 Antibody - middle region
Rabbit Polyclonal Antibody
Catalog # AI12059**Specification**

Zfp445 Antibody - middle region - Product Information

Application	WB
Primary Accession	Q8R2V3
Other Accession	NM_173364 , NP_775540
Reactivity	Mouse, Rat
Predicted	Mouse, Rat
Host	Rabbit
Clonality	Polyclonal
Calculated MW	115kDa KDa

Zfp445 Antibody - middle region - Additional Information**Gene ID** 235682**Alias Symbol** **AW610627, ZNF168, Znf445, mszf29, mszf50****Other Names**

Zinc finger protein 445, Znf445, Zfp445

Format

Liquid. Purified antibody supplied in 1x PBS buffer with 0.09% (w/v) sodium azide and 2% sucrose.

Reconstitution & Storage

Add 50 ul of distilled water. Final anti-Zfp445 antibody concentration is 1 mg/ml in PBS buffer with 2% sucrose. For longer periods of storage, store at 20°C. Avoid repeat freeze-thaw cycles.

Precautions

Zfp445 Antibody - middle region is for research use only and not for use in diagnostic or therapeutic procedures.

Zfp445 Antibody - middle region - Protein Information**Name** Znf445**Synonyms** Zfp445**Function**

Transcription regulator required to maintain maternal and paternal gene imprinting, a process by which gene expression is restricted in a parent of origin-specific manner by epigenetic modification of genomic DNA and chromatin, including DNA methylation. Acts by controlling DNA methylation during the earliest multicellular stages of development at multiple imprinting control regions (ICRs) (PubMed:30602440). Acts together with ZFP57, but ZFP57 plays the predominant

role in imprinting maintenance. In contrast, ZNF445 seems to be the major factor in human early embryonic imprinting maintenance (PubMed:30602440).

Cellular Location

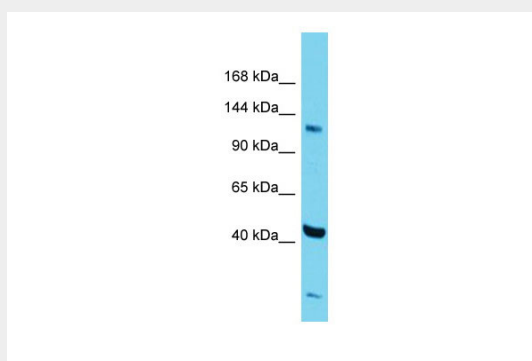
Nucleus. Note=Binds various differentially methylated regions (DMR)

Zfp445 Antibody - middle region - Protocols

Provided below are standard protocols that you may find useful for product applications.

- [Western Blot](#)
- [Blocking Peptides](#)
- [Dot Blot](#)
- [Immunohistochemistry](#)
- [Immunofluorescence](#)
- [Immunoprecipitation](#)
- [Flow Cytometry](#)
- [Cell Culture](#)

Zfp445 Antibody - middle region - Images



Host: Rabbit

Target Name: Zfp445

Sample Tissue: Mouse Testis lysates

Antibody Dilution: 1.0µg/ml