

CLEC4M antibody - middle region
Rabbit Polyclonal Antibody
Catalog # AI12147**Specification**

CLEC4M antibody - middle region - Product Information

Application	WB
Primary Accession	O9H2X3
Other Accession	NM_001144906 , NP_001138378
Reactivity	Human, Pig, Horse
Predicted	Human, Pig, Horse
Host	Rabbit
Clonality	Polyclonal
Calculated MW	30kDa KDa

CLEC4M antibody - middle region - Additional Information**Gene ID** 10332

Alias Symbol	CD299, LSIGN, CD209L, L-SIGN, DCSIGNR, HP10347, DC-SIGN2, DC-SIGNR, MGC47866, MGC129964, CLEC4M
--------------	---

Other Names

C-type lectin domain family 4 member M, CD209 antigen-like protein 1, DC-SIGN-related protein, DC-SIGNR, Dendritic cell-specific ICAM-3-grabbing non-integrin 2, DC-SIGN2, Liver/lymph node-specific ICAM-3-grabbing non-integrin, L-SIGN, CD299, CLEC4M, CD209L, CD209L1, CD299

Format

Liquid. Purified antibody supplied in 1x PBS buffer with 0.09% (w/v) sodium azide and 2% sucrose.

Reconstitution & Storage

Add 50 ul of distilled water. Final anti-CLEC4M antibody concentration is 1 mg/ml in PBS buffer with 2% sucrose. For longer periods of storage, store at 20°C. Avoid repeat freeze-thaw cycles.

Precautions

CLEC4M antibody - middle region is for research use only and not for use in diagnostic or therapeutic procedures.

CLEC4M antibody - middle region - Protein Information**Name** CLEC4M

Synonyms CD209L, CD209L1, CD299

Function

Probable pathogen-recognition receptor involved in peripheral immune surveillance in liver. May mediate the endocytosis of pathogens which are subsequently degraded in lysosomal compartments. Is a receptor for ICAM3, probably by binding to mannose-like carbohydrates.

Cellular Location

[Isoform 1]: Cell membrane; Single- pass type II membrane protein [Isoform 3]: Cell membrane; Single- pass type II membrane protein [Isoform 6]: Secreted. [Isoform 10]: Secreted.

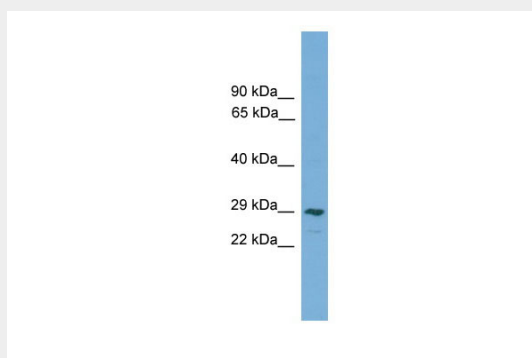
Tissue Location

Predominantly highly expressed in liver sinusoidal endothelial cells and in lymph node. Found in placental endothelium but not in macrophages. Expressed in type II alveolar cells and lung endothelial cells.

CLEC4M antibody - middle region - Protocols

Provided below are standard protocols that you may find useful for product applications.

- [Western Blot](#)
- [Blocking Peptides](#)
- [Dot Blot](#)
- [Immunohistochemistry](#)
- [Immunofluorescence](#)
- [Immunoprecipitation](#)
- [Flow Cytometry](#)
- [Cell Culture](#)

CLEC4M antibody - middle region - Images

WB Suggested Anti-CLEC4M Antibody Titration: 0.2-1 µg/ml

ELISA Titer: 1:62500

Positive Control: MCF7 cell lysate