

**Gja10 antibody - N-terminal region**  
**Rabbit Polyclonal Antibody**  
**Catalog # AI12166****Specification**

---

**Gja10 antibody - N-terminal region - Product Information**

Application	WB
Primary Accession	<a href="#">O9WUS4</a>
Other Accession	<a href="#">NM_010289</a> , <a href="#">NP_034419</a>
Reactivity	Human, Mouse, Rat, Rabbit, Zebrafish, Pig, Horse, Bovine, Dog
Predicted Host	Rat, Pig, Chicken, Bovine, Dog
Clonality	Rabbit
Calculated MW	Polyclonal 57kDa KDa

**Gja10 antibody - N-terminal region - Additional Information**

Alias Symbol	Cx-57, Cx59
Other Names	
Gap junction alpha-10 protein, Connexin-57, Cx57, Gja10	

**Format**

Liquid. Purified antibody supplied in 1x PBS buffer with 0.09% (w/v) sodium azide and 2% sucrose.

**Reconstitution & Storage**

Add 50 ul of distilled water. Final anti-Gja10 antibody concentration is 1 mg/ml in PBS buffer with 2% sucrose. For longer periods of storage, store at 20°C. Avoid repeat freeze-thaw cycles.

**Precautions**

Gja10 antibody - N-terminal region is for research use only and not for use in diagnostic or therapeutic procedures.

**Gja10 antibody - N-terminal region - Protein Information**

**Name** Gja10

**Function**

One gap junction consists of a cluster of closely packed pairs of transmembrane channels, the connexons, through which materials of low MW diffuse from one cell to a neighboring cell. Involved in tracer coupling between horizontal cells of the retina. May play a role in the regulation of horizontal cell patterning.

**Cellular Location**

Cell membrane; Multi-pass membrane protein. Cell junction, gap junction

**Tissue Location**

Low levels were detected in skin, heart, kidney, testis, ovary, intestine. Expression not detected in

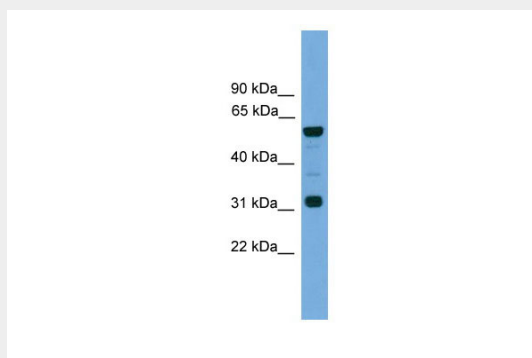
brain, sciatic nerve or liver. According to PubMed:15147297 expression is detected only in horizontal cells in the inner nuclear layer of the retina and not in other neurons of the central nervous system or tissues. Detected in the outer plexiform layer of the retina (at protein level)

### **Gja10 antibody - N-terminal region - Protocols**

Provided below are standard protocols that you may find useful for product applications.

- [Western Blot](#)
- [Blocking Peptides](#)
- [Dot Blot](#)
- [Immunohistochemistry](#)
- [Immunofluorescence](#)
- [Immunoprecipitation](#)
- [Flow Cytometry](#)
- [Cell Culture](#)

### **Gja10 antibody - N-terminal region - Images**



WB Suggested Anti-Gja10 Antibody Titration: 0.2-1  $\mu$ g/ml

Positive Control: Mouse Heart