

**SYMPK antibody - middle region**  
**Rabbit Polyclonal Antibody**  
**Catalog # AI12184****Specification**

---

**SYMPK antibody - middle region - Product Information**

Application	WB
Primary Accession	<a href="#">Q92797</a>
Other Accession	<a href="#">NM_004819</a> , <a href="#">NP_004810</a>
Reactivity	Human, Rat, Pig
Predicted	Human
Host	Rabbit
Clonality	Polyclonal
Calculated MW	141kDa KDa

**SYMPK antibody - middle region - Additional Information****Gene ID** 8189

Alias Symbol	FLJ27092, SPK, SYM
<b>Other Names</b>	
Symplekin, SYMPK, SPK	

**Format**

Liquid. Purified antibody supplied in 1x PBS buffer with 0.09% (w/v) sodium azide and 2% sucrose.

**Reconstitution & Storage**

Add 50 ul of distilled water. Final anti-SYMPK antibody concentration is 1 mg/ml in PBS buffer with 2% sucrose. For longer periods of storage, store at 20°C. Avoid repeat freeze-thaw cycles.

**Precautions**

SYMPK antibody - middle region is for research use only and not for use in diagnostic or therapeutic procedures.

**SYMPK antibody - middle region - Protein Information****Name** SYMPK**Synonyms** SPK**Function**

Scaffold protein that functions as a component of a multimolecular complex involved in histone mRNA 3'-end processing. Specific component of the tight junction (TJ) plaque, but might not be an exclusively junctional component. May have a house-keeping rule. Is involved in pre-mRNA polyadenylation. Enhances SSU72 phosphatase activity.

**Cellular Location**

Cytoplasm, cytoskeleton. Cell junction, tight junction. Cell membrane; Peripheral membrane

protein; Cytoplasmic side Cell junction. Nucleus, nucleoplasm. Note=Cytoplasmic face of adhesion plaques (major) and nucleoplasm (minor) (in cells with TJ). Nucleoplasm (in cells without TJ). Nuclear bodies of heat-stressed cells Colocalizes with HSF1 in nuclear stress bodies upon heat shock (PubMed:14707147).

#### **Tissue Location**

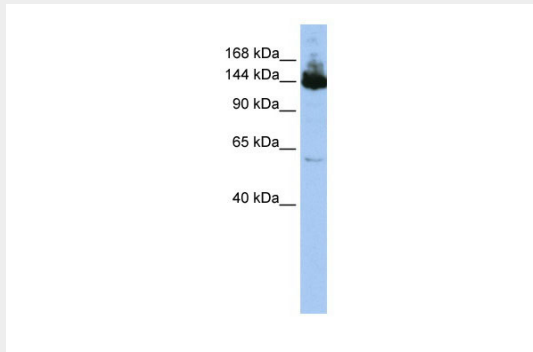
In testis, expressed in polar epithelia and Sertoli cells but not in vascular endothelia. The protein is detected in stomach, duodenum, pancreas, liver, fetal brain, carcinomas, lens- forming cells, fibroblasts, lymphocytes, lymphoma cells, erythroleukemia cells but not in endothelium of vessels, epidermis, intercalated disks, Purkinje fiber cells of the heart and lymph node

#### **SYMPK antibody - middle region - Protocols**

Provided below are standard protocols that you may find useful for product applications.

- [Western Blot](#)
- [Blocking Peptides](#)
- [Dot Blot](#)
- [Immunohistochemistry](#)
- [Immunofluorescence](#)
- [Immunoprecipitation](#)
- [Flow Cytometry](#)
- [Cell Culture](#)

#### **SYMPK antibody - middle region - Images**



WB Suggested Anti-SYMPK Antibody Titration: 0.2-1 µg/ml

ELISA Titer: 1:312500

Positive Control: HepG2 cell lysate

SYMPK is supported by BioGPS gene expression data to be expressed in HepG2