

Pex12 Antibody - C-terminal region
Rabbit Polyclonal Antibody
Catalog # AI12189**Specification**

Pex12 Antibody - C-terminal region - Product Information

Application	WB
Primary Accession	O88177
Other Accession	NM_053921 , NP_446373
Reactivity	Human, Mouse, Rat, Rabbit, Pig, Horse, Bovine, Guinea Pig, Dog
Predicted	Human, Mouse, Rat, Rabbit, Pig, Horse, Bovine, Guinea Pig, Dog
Host	Rabbit
Clonality	Polyclonal
Calculated MW	39kDa KDa

Pex12 Antibody - C-terminal region - Additional Information**Gene ID** 116718**Other Names**

Peroxisome assembly protein 12, Peroxin-12, Peroxisome assembly factor 3, PAF-3, Pex12, Paf3

Format

Liquid. Purified antibody supplied in 1x PBS buffer with 0.09% (w/v) sodium azide and 2% sucrose.

Reconstitution & Storage

Add 50 ul of distilled water. Final anti-Pex12 antibody concentration is 1 mg/ml in PBS buffer with 2% sucrose. For longer periods of storage, store at 20°C. Avoid repeat freeze-thaw cycles.

Precautions

Pex12 Antibody - C-terminal region is for research use only and not for use in diagnostic or therapeutic procedures.

Pex12 Antibody - C-terminal region - Protein Information**Name** Pex12**Synonyms** Paf3**Function**

Component of a retrotranslocation channel required for peroxisome organization by mediating export of the PEX5 receptor from peroxisomes to the cytosol, thereby promoting PEX5 recycling (By similarity). The retrotranslocation channel is composed of PEX2, PEX10 and PEX12; each subunit contributing transmembrane segments that coassemble into an open channel that specifically allows the passage of PEX5 through the peroxisomal membrane (By similarity). PEX12 also regulates PEX5 recycling by activating the E3 ubiquitin-protein ligase activity of PEX10 (By

similarity). When PEX5 recycling is compromised, PEX12 stimulates PEX10-mediated polyubiquitination of PEX5, leading to its subsequent degradation (By similarity).

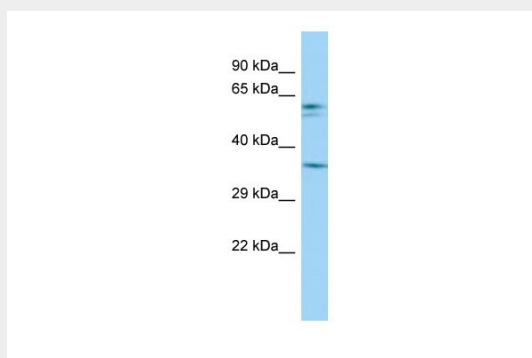
Cellular Location

Peroxisome membrane; Multi-pass membrane protein

Pex12 Antibody - C-terminal region - Protocols

Provided below are standard protocols that you may find useful for product applications.

- [Western Blot](#)
- [Blocking Peptides](#)
- [Dot Blot](#)
- [Immunohistochemistry](#)
- [Immunofluorescence](#)
- [Immunoprecipitation](#)
- [Flow Cytometry](#)
- [Cell Culture](#)

Pex12 Antibody - C-terminal region - Images

Host: Rabbit

Target Name: Pex12

Sample Tissue: Rat Small Intestine lysates

Antibody Dilution: 1.0µg/ml