

Fbxo2 antibody - C-terminal region
Rabbit Polyclonal Antibody
Catalog # AI12221**Specification**

Fbxo2 antibody - C-terminal region - Product Information

Application	WB
Primary Accession	Q80UW2
Other Accession	NM_176848 , NP_789818
Reactivity	Human, Mouse, Rat, Rabbit, Zebrafish, Pig, Horse, Bovine, Guinea Pig, Dog
Predicted Host	Human, Mouse, Rat, Chicken, Horse, Dog
Clonality	Rabbit
Calculated MW	Polyclonal 34kDa KDa

Fbxo2 antibody - C-terminal region - Additional Information**Gene ID** 230904**Alias Symbol** FBG1, FBX2, Fbs1, Fbs2, MGC54895, NFB42, Prpl4**Other Names**

F-box only protein 2, Fbxo2, Fbs1, Fbx2

Format

Liquid. Purified antibody supplied in 1x PBS buffer with 0.09% (w/v) sodium azide and 2% sucrose.

Reconstitution & Storage

Add 50 ul of distilled water. Final anti-Fbxo2 antibody concentration is 1 mg/ml in PBS buffer with 2% sucrose. For longer periods of storage, store at 20°C. Avoid repeat freeze-thaw cycles.

Precautions

Fbxo2 antibody - C-terminal region is for research use only and not for use in diagnostic or therapeutic procedures.

Fbxo2 antibody - C-terminal region - Protein Information**Name** Fbxo2**Synonyms** Fbs1, Fbx2**Function**

Substrate recognition component of a SCF (SKP1-CUL1-F-box protein) E3 ubiquitin-protein ligase complex that mediates the ubiquitination and subsequent proteasomal degradation of target proteins. Involved in the endoplasmic reticulum-associated degradation pathway (ERAD) for misfolded luminal proteins by recognizing and binding sugar chains on unfolded glycoproteins that are retrotranslocated into the cytosol and promoting their ubiquitination and subsequent

degradation. Prevents formation of cytosolic aggregates of unfolded glycoproteins that have been retrotranslocated into the cytosol. Able to recognize and bind denatured glycoproteins, preferentially those of the high-mannose type.

Cellular Location

Cytoplasm. Microsome membrane; Peripheral membrane protein; Cytoplasmic side

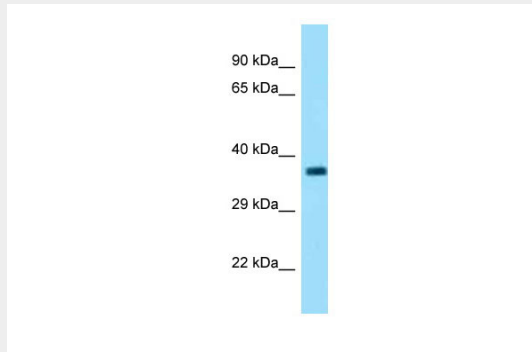
Tissue Location

Detected in brain and cochlea, in epithelial support cells and hair cells of the organ of Corti (at protein level)

Fbxo2 antibody - C-terminal region - Protocols

Provided below are standard protocols that you may find useful for product applications.

- [Western Blot](#)
- [Blocking Peptides](#)
- [Dot Blot](#)
- [Immunohistochemistry](#)
- [Immunofluorescence](#)
- [Immunoprecipitation](#)
- [Flow Cytometry](#)
- [Cell Culture](#)

Fbxo2 antibody - C-terminal region - Images

WB Suggested Anti-Fbxo2 Antibody Titration: 1.0 µg/ml

Positive Control: Mouse Small Intestine