

**Dtx3 antibody - C-terminal region**  
**Rabbit Polyclonal Antibody**  
**Catalog # AI12280****Specification**

---

**Dtx3 antibody - C-terminal region - Product Information**

Application	WB
Primary Accession	<a href="#">Q80V91</a>
Other Accession	<a href="#">NM_030714</a> , <a href="#">NP_109639</a>
Reactivity	Human, Mouse, Rat, Rabbit, Zebrafish, Pig, Horse, Bovine, Guinea Pig, Dog
Predicted	Human, Mouse, Rat, Rabbit, Pig, Bovine, Guinea Pig, Dog
Host	Rabbit
Clonality	Polyclonal
Calculated MW	38kDa kDa

**Dtx3 antibody - C-terminal region - Additional Information****Gene ID** 80904

Alias Symbol	<b>Deltex3, MGC106339, mg310</b>
<b>Other Names</b>	
Probable E3 ubiquitin-protein ligase DTX3, 6.3.2.-, Protein deltex-3, Deltex3, mDTX3, Dtx3	

**Format**

Liquid. Purified antibody supplied in 1x PBS buffer with 0.09% (w/v) sodium azide and 2% sucrose.

**Reconstitution & Storage**

Add 50 ul of distilled water. Final anti-Dtx3 antibody concentration is 1 mg/ml in PBS buffer with 2% sucrose. For longer periods of storage, store at 20°C. Avoid repeat freeze-thaw cycles.

**Precautions**

Dtx3 antibody - C-terminal region is for research use only and not for use in diagnostic or therapeutic procedures.

**Dtx3 antibody - C-terminal region - Protein Information****Name** Dtx3**Function**

Regulator of Notch signaling, a signaling pathway involved in cell-cell communications that regulates a broad spectrum of cell-fate determinations. Probably acts both as a positive and negative regulator of Notch, depending on the developmental and cell context. Functions as a ubiquitin ligase protein in vitro, suggesting that it may regulate the Notch pathway via some ubiquitin ligase activity.

**Cellular Location**

Cytoplasm.

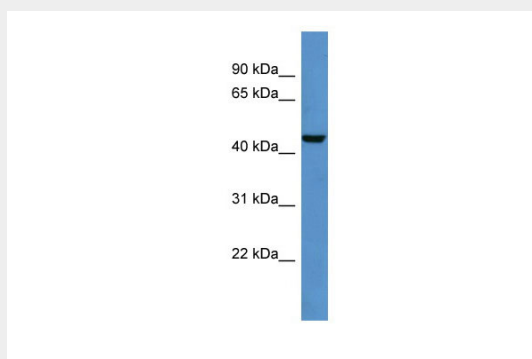
**Tissue Location**

Strongly expressed in testis and brain. Weakly expressed in kidney.

**Dtx3 antibody - C-terminal region - Protocols**

Provided below are standard protocols that you may find useful for product applications.

- [Western Blot](#)
- [Blocking Peptides](#)
- [Dot Blot](#)
- [Immunohistochemistry](#)
- [Immunofluorescence](#)
- [Immunoprecipitation](#)
- [Flow Cytometry](#)
- [Cell Culture](#)

**Dtx3 antibody - C-terminal region - Images**

WB Suggested Anti-Dtx3 Antibody Titration: 0.2-1  $\mu$ g/ml

ELISA Titer: 1:62500

Positive Control: Mouse Brain