

STEAP3 antibody - N-terminal region
Rabbit Polyclonal Antibody
Catalog # AI12290**Specification**

STEAP3 antibody - N-terminal region - Product Information

Application	WB
Primary Accession	Q658P3
Other Accession	NM_001008410 , NP_001008410
Reactivity	Human, Mouse, Rat, Rabbit, Pig, Horse, Bovine, Guinea Pig, Dog
Predicted	Human, Mouse, Rabbit, Horse, Bovine, Guinea Pig, Dog
Host	Rabbit
Clonality	Polyclonal
Calculated MW	54kDa kDa

STEAP3 antibody - N-terminal region - Additional Information**Gene ID** 55240**Alias Symbol** **STMP3, TSAP6, dudlin-2****Other Names**

Metalloreductase STEAP3, 1.16.1.-, Dudulin-2, Six-transmembrane epithelial antigen of prostate 3, Tumor suppressor-activated pathway protein 6, hTSAP6, pHyde, hpHyde, STEAP3, TSAP6

Format

Liquid. Purified antibody supplied in 1x PBS buffer with 0.09% (w/v) sodium azide and 2% sucrose.

Reconstitution & Storage

Add 100 ul of distilled water. Final anti-STEAP3 antibody concentration is 1 mg/ml in PBS buffer with 2% sucrose. For longer periods of storage, store at 20°C. Avoid repeat freeze-thaw cycles.

Precautions

STEAP3 antibody - N-terminal region is for research use only and not for use in diagnostic or therapeutic procedures.

STEAP3 antibody - N-terminal region - Protein Information**Name** STEAP3**Synonyms** TSAP6**Function**

Integral membrane protein that functions as a NADPH-dependent ferric-chelate reductase, using NADPH from one side of the membrane to reduce a Fe(3+) chelate that is bound on the other side of the membrane (PubMed:26205815). Mediates sequential transmembrane electron transfer from

NADPH to FAD and onto heme, and finally to the Fe(3+) chelate (By similarity). Can also reduce Cu(2+) to Cu(1+) (By similarity). Mediates efficient transferrin-dependent iron uptake in erythroid cells (By similarity). May play a role downstream of p53/TP53 to interface apoptosis and cell cycle progression (By similarity). Indirectly involved in exosome secretion by facilitating the secretion of proteins such as TCTP (PubMed:15319436, PubMed:16651434).

Cellular Location

Endosome membrane {ECO:0000250|UniProtKB:Q8CI59}; Multi-pass membrane protein.
Note=Localizes to vesicular- like structures at the plasma membrane and around the nucleus

Tissue Location

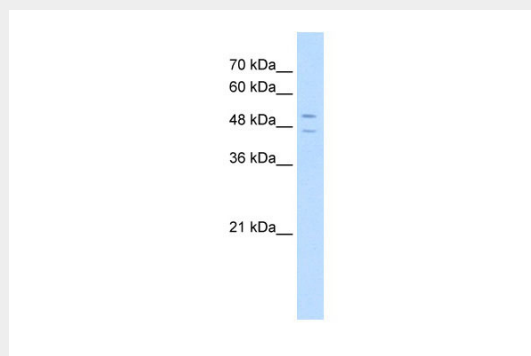
Expressed in adult bone marrow, placenta, liver, skeletal muscle and pancreas. Down-regulated in hepatocellular carcinoma.

STEAP3 antibody - N-terminal region - Protocols

Provided below are standard protocols that you may find useful for product applications.

- [Western Blot](#)
- [Blocking Peptides](#)
- [Dot Blot](#)
- [Immunohistochemistry](#)
- [Immunofluorescence](#)
- [Immunoprecipitation](#)
- [Flow Cytometry](#)
- [Cell Culture](#)

STEAP3 antibody - N-terminal region - Images



WB Suggested Anti-STEAP3 Antibody Titration: 5.0µg/ml
Positive Control: HepG2 cell lysate

STEAP3 antibody - N-terminal region - References

Amzallag,N.,(2004)J.Biol.Chem.279(44),46104-46112ReconstitutionandStorage:Forshorttermuse,storeat2-8°Cupto1week.Forlongtermstorage,storeat-20°Cinsmallaliquotstopreventfreeze-thawcycles.