

**Slc25a27 antibody - C-terminal region**  
**Rabbit Polyclonal Antibody**  
**Catalog # AI12339****Specification**

---

**Slc25a27 antibody - C-terminal region - Product Information**

Application	WB
Primary Accession	<a href="#">O9D6D0</a>
Other Accession	<a href="#">NM_028711</a> , <a href="#">NP_082987</a>
Reactivity	Human, Mouse, Rat, Rabbit, Zebrafish, Pig, Sheep, Horse, Bovine, Guinea Pig, Dog
Predicted	Human, Mouse, Rat, Rabbit, Zebrafish, Pig, Bovine, Dog
Host	Rabbit
Clonality	Polyclonal
Calculated MW	36kDa KDa

**Slc25a27 antibody - C-terminal region - Additional Information****Gene ID** 74011**Alias Symbol** 3632410G24Rik, 9430092A03Rik, D530043E16Rik, Ucp4**Format**

Liquid. Purified antibody supplied in 1x PBS buffer with 0.09% (w/v) sodium azide and 2% sucrose.

**Reconstitution & Storage**

Add 50 ul of distilled water. Final anti-Slc25a27 antibody concentration is 1 mg/ml in PBS buffer with 2% sucrose. For longer periods of storage, store at 20°C. Avoid repeat freeze-thaw cycles.

**Precautions**

Slc25a27 antibody - C-terminal region is for research use only and not for use in diagnostic or therapeutic procedures.

**Slc25a27 antibody - C-terminal region - Protein Information****Name** Slc25a27 {ECO:0000312|MGI:MGI:1921261}**Function**

Facilitates proton transport across the inner mitochondrial membrane and may dissipate excessive proton gradient associated with oxidative and metabolic stress at neuronal synapses. Regulates glutamate-induced proton conductance in astrocytes, shifting the energy metabolism toward aerobic glycolysis and lactate transfer to neurons for ATP synthesis. Can transport chloride ions with lower efficiency. The transport mechanism remains to be elucidated.

**Cellular Location**

Mitochondrion inner membrane; Multi-pass membrane protein. Cell projection, neuron projection. Note=Localizes to neuronal cell body and processes. Within mitochondrial inner membrane, it is

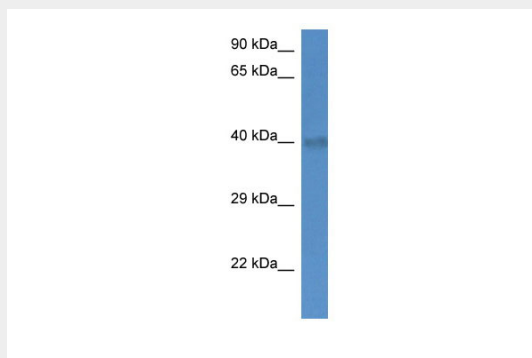
mainly observed in the inner boundary membrane locally separated from F(1)F(0) ATP synthase, which is preferentially localized in cristae

### **Slc25a27 antibody - C-terminal region - Protocols**

Provided below are standard protocols that you may find useful for product applications.

- [Western Blot](#)
- [Blocking Peptides](#)
- [Dot Blot](#)
- [Immunohistochemistry](#)
- [Immunofluorescence](#)
- [Immunoprecipitation](#)
- [Flow Cytometry](#)
- [Cell Culture](#)

### **Slc25a27 antibody - C-terminal region - Images**



WB Suggested Anti-Slc25a27 Antibody Titration: 1.0 µg/ml  
Positive Control: Mouse Brain