

**Slc9a3r2 antibody - N-terminal region**  
**Rabbit Polyclonal Antibody**  
**Catalog # AI12343****Specification**

---

**Slc9a3r2 antibody - N-terminal region - Product Information**

|                   |   |
|-------------------|---|
| Application       | WB  |
| Primary Accession | <a href="#">O920G2</a>                                    |
| Other Accession   | <a href="#">NM_053811</a> , <a href="#">NP_446263</a>     |
| Reactivity        | Human, Mouse, Rat, Rabbit, Horse, Bovine, Guinea Pig, Dog |
| Predicted Host    | Human, Mouse, Rat, Pig, Dog                               |
| Clonality         | Rabbit  |
| Calculated MW     | Polyclonal<br>37kDa KDa                                   |

**Slc9a3r2 antibody - N-terminal region - Additional Information****Gene ID** 116501**Alias Symbol** E3karp**Other Names**

Na(+)/H(+) exchange regulatory cofactor NHE-RF2, NHERF-2, NHE3 kinase A regulatory protein E3KARP, SRY-interacting protein 1, SIP-1, Sodium-hydrogen exchanger regulatory factor 2, Solute carrier family 9 isoform A3 regulatory factor 2, Tyrosine kinase activator protein 1, TKA-1, Slc9a3r2, Nherf2

**Format**

Liquid. Purified antibody supplied in 1x PBS buffer with 0.09% (w/v) sodium azide and 2% sucrose.

**Reconstitution & Storage**

Add 50 ul of distilled water. Final anti-Slc9a3r2 antibody concentration is 1 mg/ml in PBS buffer with 2% sucrose. For longer periods of storage, store at 20°C. Avoid repeat freeze-thaw cycles.

**Precautions**

Slc9a3r2 antibody - N-terminal region is for research use only and not for use in diagnostic or therapeutic procedures.

**Slc9a3r2 antibody - N-terminal region - Protein Information****Name** Nherf2**Synonyms** Slc9a3r2**Function**

Scaffold protein that connects plasma membrane proteins with members of the ezrin/moesin/radixin family and thereby helps to link them to the actin cytoskeleton and to regulate their surface expression. Necessary for cAMP-mediated phosphorylation and inhibition of

SLC9A3. May also act as scaffold protein in the nucleus.

#### **Cellular Location**

Endomembrane system; Peripheral membrane protein. Nucleus. Apical cell membrane.

Note=Nuclear, in a punctate pattern Localizes with EZR and PODXL at the apical cell membrane of glomerular epithelium cells and the sides of the foot processes

#### **Tissue Location**

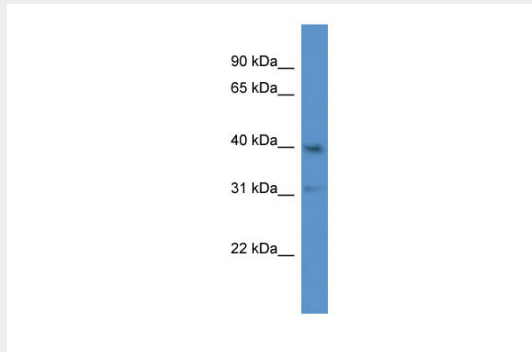
Glomerular epithelium cell (podocyte) (at protein level). Detected in liver, bile duct, kidney glomerulus and lung

### **Slc9a3r2 antibody - N-terminal region - Protocols**

Provided below are standard protocols that you may find useful for product applications.

- [Western Blot](#)
- [Blocking Peptides](#)
- [Dot Blot](#)
- [Immunohistochemistry](#)
- [Immunofluorescence](#)
- [Immunoprecipitation](#)
- [Flow Cytometry](#)
- [Cell Culture](#)

### **Slc9a3r2 antibody - N-terminal region - Images**



WB Suggested Anti-Slc9a3r2 Antibody Titration: 1.0 µg/ml

Positive Control: Rat Brain