

**AWAT1 antibody - N-terminal region**  
**Rabbit Polyclonal Antibody**  
**Catalog # AI12469****Specification**

---

**AWAT1 antibody - N-terminal region - Product Information**

Application	WB
Primary Accession	<a href="#">Q58HT5</a>
Other Accession	<a href="#">NM_001013579</a> , <a href="#">NP_001013597</a>
Reactivity	Human, Mouse, Rat, Rabbit, Zebrafish, Horse, Bovine, Guinea Pig, Dog
Predicted	Human, Mouse, Rat, Bovine, Guinea Pig, Dog
Host	Rabbit
Clonality	Polyclonal
Calculated MW	38kDa kDa

**AWAT1 antibody - N-terminal region - Additional Information****Gene ID** 158833**Alias Symbol** **AWAT1, DGA2, DGAT2L3****Other Names**

Acyl-CoA wax alcohol acyltransferase 1, 2.3.1.75, Diacylglycerol O-acyltransferase 2-like protein 3, Diacylglycerol acyltransferase 2, Long-chain-alcohol O-fatty-acyltransferase 1, AWAT1, DGA2, DGAT2L3

**Format**

Liquid. Purified antibody supplied in 1x PBS buffer with 0.09% (w/v) sodium azide and 2% sucrose.

**Reconstitution & Storage**

Add 50 ul of distilled water. Final anti-AWAT1 antibody concentration is 1 mg/ml in PBS buffer with 2% sucrose. For longer periods of storage, store at 20°C. Avoid repeat freeze-thaw cycles.

**Precautions**

AWAT1 antibody - N-terminal region is for research use only and not for use in diagnostic or therapeutic procedures.

**AWAT1 antibody - N-terminal region - Protein Information****Name** AWAT1**Synonyms** DGA2, DGAT2L3**Function**

Acyltransferase that catalyzes the formation of ester bonds between fatty alcohols and fatty acyl-CoAs to form wax monoesters (PubMed:&lt;a href="http://www.uniprot.org/citations/15671038" target="\_blank"&gt;15671038&lt;/a&gt;). Shows a strong preference for decyl alcohol (C10), with less

activity towards C16 and C18 alcohols (PubMed:<a href="http://www.uniprot.org/citations/15671038" target="\_blank">15671038</a>). Shows a strong preference for saturated acyl-CoAs (PubMed:<a href="http://www.uniprot.org/citations/15671038" target="\_blank">15671038</a>).

#### Cellular Location

Endoplasmic reticulum membrane {ECO:0000250|UniProtKB:Q6E213}; Multi-pass membrane protein

#### Tissue Location

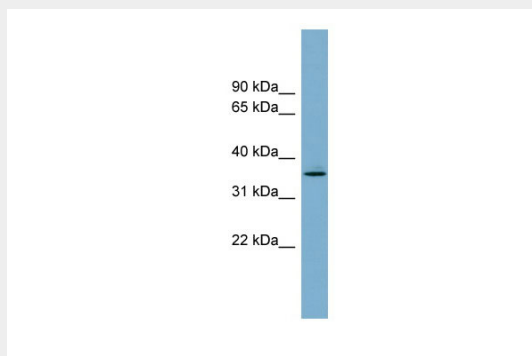
Predominantly expressed in skin, where it is limited to the sebaceous gland. Expressed in more mature, centrally located cells just before their rupture and sebum release. Also expressed in all tissues except spleen. Expressed at higher level in thymus, prostate and testis.

### AWAT1 antibody - N-terminal region - Protocols

Provided below are standard protocols that you may find useful for product applications.

- [Western Blot](#)
- [Blocking Peptides](#)
- [Dot Blot](#)
- [Immunohistochemistry](#)
- [Immunofluorescence](#)
- [Immunoprecipitation](#)
- [Flow Cytometry](#)
- [Cell Culture](#)

### AWAT1 antibody - N-terminal region - Images



WB Suggested Anti-AWAT1 Antibody Titration: 0.2-1 µg/ml  
Positive Control: Human Spleen