

LRRC26 antibody - middle region
Rabbit Polyclonal Antibody
Catalog # AI12474**Specification**

LRRC26 antibody - middle region - Product Information

Application	WB
Primary Accession	Q2I0M4
Other Accession	NM_001013653 , NP_001013675
Reactivity	Human, Horse, Bovine, Guinea Pig, Dog
Predicted	Bovine, Dog
Host	Rabbit
Clonality	Polyclonal
Calculated MW	37kDa KDa

LRRC26 antibody - middle region - Additional Information**Gene ID** 389816**Alias Symbol** **bA350O14.10, CAPC****Other Names**

Leucine-rich repeat-containing protein 26, BK channel auxiliary gamma subunit LRRC26, Cytokeratin-associated protein in cancer, LRRC26, CAPC

Format

Liquid. Purified antibody supplied in 1x PBS buffer with 0.09% (w/v) sodium azide and 2% sucrose.

Reconstitution & Storage

Add 50 ul of distilled water. Final anti-LRRC26 antibody concentration is 1 mg/ml in PBS buffer with 2% sucrose. For longer periods of storage, store at 20°C. Avoid repeat freeze-thaw cycles.

Precautions

LRRC26 antibody - middle region is for research use only and not for use in diagnostic or therapeutic procedures.

LRRC26 antibody - middle region - Protein Information**Name** LRRC26**Synonyms** CAPC**Function**

Auxiliary protein of the large-conductance, voltage and calcium-activated potassium channel (BK alpha). Required for the conversion of BK alpha channels from a high-voltage to a low-voltage activated channel type in non-excitabile cells. These are characterized by negative membrane voltages and constant low levels of calcium.

Cellular Location

Cell membrane; Single-pass type I membrane protein. Cytoplasm, cytoskeleton. Note=Localizes to the cytoplasm when expressed at high levels.

Tissue Location

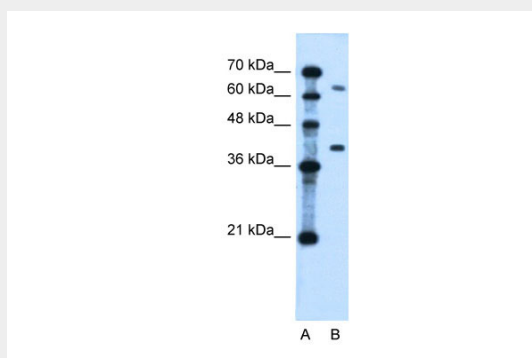
Isoform 1 is expressed highly in normal prostate and salivary gland, very weakly in colon, pancreas, and intestine, and not at all in other tissues. Isoform 1 is expressed highly in many cancer cell lines and in breast cancer, pancreatic cancer and colon cancer. Isoform 2 is expressed in cancer cell lines

LRRC26 antibody - middle region - Protocols

Provided below are standard protocols that you may find useful for product applications.

- [Western Blot](#)
- [Blocking Peptides](#)
- [Dot Blot](#)
- [Immunohistochemistry](#)
- [Immunofluorescence](#)
- [Immunoprecipitation](#)
- [Flow Cytometry](#)
- [Cell Culture](#)

LRRC26 antibody - middle region - Images



WB Suggested Anti-LRRC26 Antibody Titration: 0.2-1 µg/ml
Positive Control: Jurkat cell lysate

LRRC26 antibody - middle region - References

Egland, K.A., (2006) Proc. Natl. Acad. Sci. U.S.A. 103(15), 5929-5934 Reconstitution and Storage: For short term use, store at 2-8°C up to 1 week. For long term storage, store at -20°C in small aliquots to prevent freeze-thaw cycles.