

**Itga7 antibody - N-terminal region**  
**Rabbit Polyclonal Antibody**  
**Catalog # AI12558****Specification**

---

**Itga7 antibody - N-terminal region - Product Information**

Application	WB
Primary Accession	<a href="#">Q63258</a>
Other Accession	<a href="#">NM_030842</a> , <a href="#">NP_110469</a>
Reactivity	Human, Mouse, Rat, Rabbit, Horse, Guinea Pig, Dog
Predicted	Human, Mouse, Rat, Rabbit, Pig, Horse, Guinea Pig, Dog
Host	Rabbit
Clonality	Polyclonal
Calculated MW	130kDa KDa

**Itga7 antibody - N-terminal region - Additional Information****Gene ID** 81008**Alias Symbol** MGC105724, Itga7**Other Names**

Integrin alpha-7, H36-alpha7, Integrin alpha-7 heavy chain, Integrin alpha-7 light chain, Integrin alpha-7 70 kDa form, Itga7

**Format**

Liquid. Purified antibody supplied in 1x PBS buffer with 0.09% (w/v) sodium azide and 2% sucrose.

**Reconstitution & Storage**

Add 50 ul of distilled water. Final anti-Itga7 antibody concentration is 1 mg/ml in PBS buffer with 2% sucrose. For longer periods of storage, store at 20°C. Avoid repeat freeze-thaw cycles.

**Precautions**

Itga7 antibody - N-terminal region is for research use only and not for use in diagnostic or therapeutic procedures.

**Itga7 antibody - N-terminal region - Protein Information****Name** Itga7**Function**

Integrin alpha-7/beta-1 is the primary laminin receptor on skeletal myoblasts and adult myofibers. During myogenic differentiation, it may induce changes in the shape and mobility of myoblasts, and facilitate their localization at laminin-rich sites of secondary fiber formation. Involved in the maintenance of the myofibers cytoarchitecture as well as for their anchorage, viability and functional integrity. Required to promote contractile phenotype acquisition in differentiated airway smooth muscle (ASM) cells (By similarity). Acts as a Schwann cell receptor for laminin-2. Acts as a

receptor of COMP and mediates its effect on vascular smooth muscle cells (VSMCs) maturation.

**Cellular Location**

Membrane; Single-pass type I membrane protein.

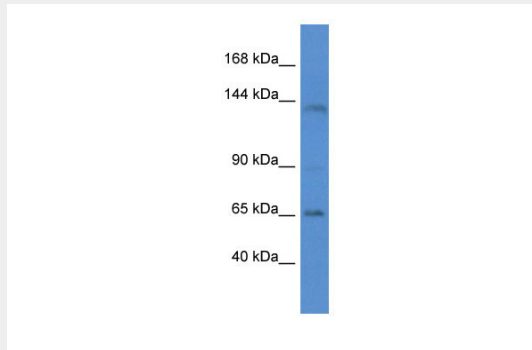
**Tissue Location**

Expressed in skeletal and cardiac muscle. Expressed in replicating myoblasts. In differentiated muscle fibers localizes between fibers and the surrounding matrix. Isoform Alpha-7X1A and isoform Alpha-7X1B are expressed at myotendinous and neuromuscular junctions; isoform Alpha-7X1C is expressed at neuromuscular junctions and at extrasynaptic sites.

**Itga7 antibody - N-terminal region - Protocols**

Provided below are standard protocols that you may find useful for product applications.

- [Western Blot](#)
- [Blocking Peptides](#)
- [Dot Blot](#)
- [Immunohistochemistry](#)
- [Immunofluorescence](#)
- [Immunoprecipitation](#)
- [Flow Cytometry](#)
- [Cell Culture](#)

**Itga7 antibody - N-terminal region - Images**

WB Suggested Anti-Itga7 Antibody Titration: 1.0 µg/ml

Positive Control: Rat Liver