

KNG1 antibody - middle region
Rabbit Polyclonal Antibody
Catalog # AI12604**Specification**

KNG1 antibody - middle region - Product Information

Application	WB
Primary Accession	P01042
Other Accession	NM_001102416 , NP_001095886
Reactivity	Human, Mouse, Pig, Horse
Predicted	Human, Mouse, Pig, Horse
Host	Rabbit
Clonality	Polyclonal
Calculated MW	72kDa KDa

KNG1 antibody - middle region - Additional Information**Gene ID 3827**

Alias Symbol	BDK, KNG
--------------	----------

Other Names

Kininogen-1, Alpha-2-thiol proteinase inhibitor, Fitzgerald factor, High molecular weight kininogen, HMWK, Williams-Fitzgerald-Flaujeac factor, Kininogen-1 heavy chain, T-kinin, Ile-Ser-Bradykinin, Bradykinin, Kallidin I, Lysyl-bradykinin, Kallidin II, Kininogen-1 light chain, Low molecular weight growth-promoting factor, KNG1, BDK, KNG

Format

Liquid. Purified antibody supplied in 1x PBS buffer with 0.09% (w/v) sodium azide and 2% sucrose.

Reconstitution & Storage

Add 50 ul of distilled water. Final anti-KNG1 antibody concentration is 1 mg/ml in PBS buffer with 2% sucrose. For longer periods of storage, store at 20°C. Avoid repeat freeze-thaw cycles.

Precautions

KNG1 antibody - middle region is for research use only and not for use in diagnostic or therapeutic procedures.

KNG1 antibody - middle region - Protein Information

Name KNG1

Synonyms BDK, KNG

Function

Kininogens are inhibitors of thiol proteases. HMW-kininogen plays an important role in blood coagulation by helping to position optimally prekallikrein and factor XI next to factor XII; HMW-kininogen inhibits the thrombin- and plasmin-induced aggregation of thrombocytes. LMW-kininogen inhibits the aggregation of thrombocytes. LMW-kininogen is in contrast to

HMW-kininogen not involved in blood clotting.

Cellular Location

Secreted, extracellular space.

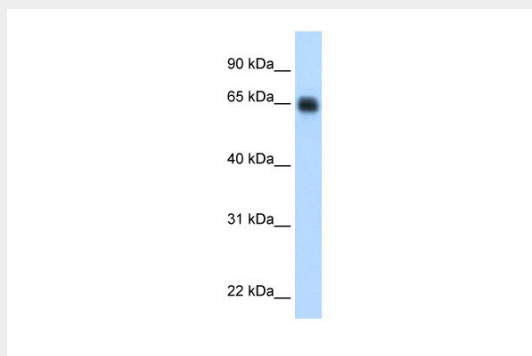
Tissue Location

Secreted in plasma. T-kinin is detected in malignant ovarian, colon and breast carcinomas, but not in benign tumors.

KNG1 antibody - middle region - Protocols

Provided below are standard protocols that you may find useful for product applications.

- [Western Blot](#)
- [Blocking Peptides](#)
- [Dot Blot](#)
- [Immunohistochemistry](#)
- [Immunofluorescence](#)
- [Immunoprecipitation](#)
- [Flow Cytometry](#)
- [Cell Culture](#)

KNG1 antibody - middle region - Images

WB Suggested Anti-KNG1 Antibody Titration: 0.2-1 μ g/ml
Positive Control: Human Liver