

Chst2 antibody - middle region
Rabbit Polyclonal Antibody
Catalog # AI12680**Specification**

Chst2 antibody - middle region - Product Information

Application	WB
Primary Accession	Q80WV3
Other Accession	NM_018763 , NP_061233
Reactivity	Human, Mouse, Rat, Rabbit, Horse, Bovine, Guinea Pig, Dog
Predicted Host	Human, Mouse, Rabbit, Horse, Bovine, Dog
Clonality	Rabbit
Calculated MW	Polyclonal 58kDa KDa

Chst2 antibody - middle region - Additional Information**Gene ID** 54371**Alias Symbol** AI428561, AW121776, C130041E03Rik, Chts2, GST-2, GlcNAc6ST, Gn6st**Other Names**

Carbohydrate sulfotransferase 2, 2.8.2.-, Galactose/N-acetylglucosamine/N-acetylglucosamine 6-O-sulfotransferase 2, GST-2, N-acetylglucosamine 6-O-sulfotransferase 1, GlcNAc6ST-1, Gn6st-1, Chst2, Gst2

Format

Liquid. Purified antibody supplied in 1x PBS buffer with 0.09% (w/v) sodium azide and 2% sucrose.

Reconstitution & Storage

Add 50 ul of distilled water. Final anti-Chst2 antibody concentration is 1 mg/ml in PBS buffer with 2% sucrose. For longer periods of storage, store at 20°C. Avoid repeat freeze-thaw cycles.

Precautions

Chst2 antibody - middle region is for research use only and not for use in diagnostic or therapeutic procedures.

Chst2 antibody - middle region - Protein Information**Name** Chst2**Synonyms** Gst2**Function**

Sulfotransferase that utilizes 3'-phospho-5'-adenylyl sulfate (PAPS) as sulfonate donor to catalyze the transfer of sulfate to position 6 of non-reducing N-acetylglucosamine (GlcNAc) residues within keratan-like structures on N-linked glycans and within mucin-associated glycans that can

ultimately serve as SELL ligands. SELL ligands are present in high endothelial cells (HEVs) and play a central role in lymphocyte homing at sites of inflammation. Participates in biosynthesis of the SELL ligand sialyl 6-sulfo Lewis X and in lymphocyte homing to Peyer patches. Has no activity toward O-linked sugars. Its substrate specificity may be influenced by its subcellular location. Sulfates GlcNAc residues at terminal, non-reducing ends of oligosaccharide chains.

Cellular Location

Golgi apparatus, trans-Golgi network membrane; Single-pass type II membrane protein

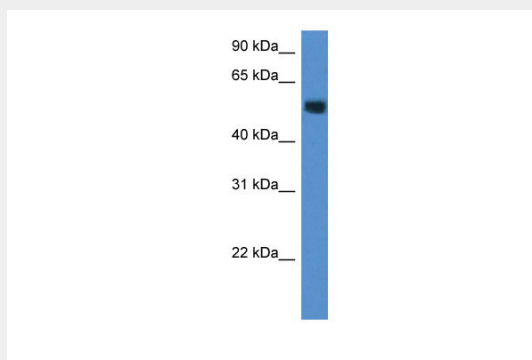
Tissue Location

In brain, it is expressed in pyramidal cells in the CA3 subregion of the hippocampus, cerebellar nucleus and Purkinje cells. Expressed in peripheral lymph nodes

Chst2 antibody - middle region - Protocols

Provided below are standard protocols that you may find useful for product applications.

- [Western Blot](#)
- [Blocking Peptides](#)
- [Dot Blot](#)
- [Immunohistochemistry](#)
- [Immunofluorescence](#)
- [Immunoprecipitation](#)
- [Flow Cytometry](#)
- [Cell Culture](#)

Chst2 antibody - middle region - Images

WB Suggested Anti-Chst2 Antibody Titration: 1.0 µg/ml
Positive Control: Mouse Brain