

**NELL2 antibody - N-terminal region**  
**Rabbit Polyclonal Antibody**  
**Catalog # AI12704****Specification**

---

**NELL2 antibody - N-terminal region - Product Information**

Application	WB
Primary Accession	<a href="#">Q99435</a>
Other Accession	<a href="#">NM_006159</a> , <a href="#">NP_006150</a>
Reactivity	Human, Mouse, Rat, Rabbit, Pig, Horse, Bovine, Guinea Pig, Dog
Predicted	Human, Mouse, Rat, Rabbit, Horse, Bovine, Guinea Pig, Dog
Host	Rabbit
Clonality	Polyclonal
Calculated MW	91kDa KDa

**NELL2 antibody - N-terminal region - Additional Information****Gene ID** 4753**Alias Symbol** **NRP2****Other Names**

Protein kinase C-binding protein NELL2, NEL-like protein 2, Nel-related protein 2, NELL2, NRP2

**Format**

Liquid. Purified antibody supplied in 1x PBS buffer with 0.09% (w/v) sodium azide and 2% sucrose.

**Reconstitution & Storage**

Add 100 ul of distilled water. Final anti-NELL2 antibody concentration is 1 mg/ml in PBS buffer with 2% sucrose. For longer periods of storage, store at 20°C. Avoid repeat freeze-thaw cycles.

**Precautions**

NELL2 antibody - N-terminal region is for research use only and not for use in diagnostic or therapeutic procedures.

**NELL2 antibody - N-terminal region - Protein Information****Name** NELL2 ([HGNC:7751](#))**Synonyms** NRP2**Function**

Plays multiple roles in neural tissues, regulates neuronal proliferation, survival, differentiation, polarization, as well as axon guidance and synaptic functions. Plays an important role in axon development during neuronal differentiation through the MAPK intracellular signaling pathway (By similarity). Via binding to its receptor ROBO3, plays a role in axon guidance, functioning as a repulsive axon guidance cue that contributes to commissural axon guidance to the midline

(PubMed:<a href="http://www.uniprot.org/citations/32198364" target="\_blank">32198364</a>). Required for neuron survival through the modulation of MAPK signaling pathways too. Involved in the regulation of hypothalamic GNRH secretion and the control of puberty (By similarity).

#### Cellular Location

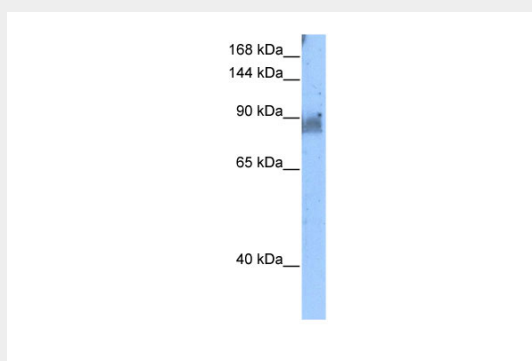
Secreted {ECO:0000250|UniProtKB:Q62918}.

### NELL2 antibody - N-terminal region - Protocols

Provided below are standard protocols that you may find useful for product applications.

- [Western Blot](#)
- [Blocking Peptides](#)
- [Dot Blot](#)
- [Immunohistochemistry](#)
- [Immunofluorescence](#)
- [Immunoprecipitation](#)
- [Flow Cytometry](#)
- [Cell Culture](#)

### NELL2 antibody - N-terminal region - Images



WB Suggested Anti-NELL2 Antibody Titration: 5.0µg/ml  
Positive Control: Transfected 293T

### NELL2 antibody - N-terminal region - References

Lim,J.,(2006)Cell125(4),801-814ReconstitutionandStorage:Forshorttermuse,storeat2-8Cupto1week. Forlongtermstorage,storeat-20Cinsmallaliquotstopreventfreeze-thawcycles.