

PSMC3IP antibody - middle region
Rabbit Polyclonal Antibody
Catalog # AI12819**Specification**

PSMC3IP antibody - middle region - Product Information

Application	WB
Primary Accession	O9P2W1
Other Accession	NM_016556 , NP_057640
Reactivity	Human, Mouse, Rat, Rabbit, Pig, Goat, Horse, Bovine, Guinea Pig, Dog
Predicted	Human, Mouse, Rat, Rabbit, Goat, Bovine, Dog
Host	Rabbit
Clonality	Polyclonal
Calculated MW	25kDa KDa

PSMC3IP antibody - middle region - Additional Information**Gene ID** 29893**Alias Symbol** **GT198, HOP2, TBPIP, ODG3, HUMGT198A****Other Names**

Homologous-pairing protein 2 homolog, Nuclear receptor coactivator GT198, PSMC3-interacting protein, Proteasome 26S ATPase subunit 3-interacting protein, Tat-binding protein 1-interacting protein, TBP-1-interacting protein, PSMC3IP, HOP2, TBPIP

Format

Liquid. Purified antibody supplied in 1x PBS buffer with 0.09% (w/v) sodium azide and 2% sucrose.

Reconstitution & Storage

Add 100 ul of distilled water. Final anti-PSMC3IP antibody concentration is 1 mg/ml in PBS buffer with 2% sucrose. For longer periods of storage, store at 20°C. Avoid repeat freeze-thaw cycles.

Precautions

PSMC3IP antibody - middle region is for research use only and not for use in diagnostic or therapeutic procedures.

PSMC3IP antibody - middle region - Protein Information**Name** PSMC3IP**Synonyms** HOP2, TBPIP**Function**

Plays an important role in meiotic recombination. Stimulates DMC1-mediated strand exchange required for pairing homologous chromosomes during meiosis. The complex PSMC3IP/MND1 binds DNA, stimulates the recombinase activity of DMC1 as well as DMC1 D-loop formation from

double-strand DNA. This complex stabilizes presynaptic RAD51 and DMC1 filaments formed on single strand DNA to capture double-strand DNA. This complex stimulates both synaptic and presynaptic critical steps in RAD51 and DMC1-promoted homologous pairing. May inhibit HIV-1 viral protein TAT activity and modulate the activity of proteasomes through association with PSMC3. Acts as a tissue specific coactivator of hormone-dependent transcription mediated by nuclear receptors.

Cellular Location

Nucleus.

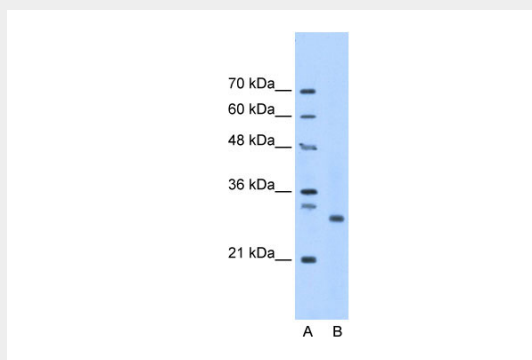
Tissue Location

Highly expressed in testis and colon.

PSMC3IP antibody - middle region - Protocols

Provided below are standard protocols that you may find useful for product applications.

- [Western Blot](#)
- [Blocking Peptides](#)
- [Dot Blot](#)
- [Immunohistochemistry](#)
- [Immunofluorescence](#)
- [Immunoprecipitation](#)
- [Flow Cytometry](#)
- [Cell Culture](#)

PSMC3IP antibody - middle region - Images

WB Suggested Anti-PSMC3IP Antibody Titration: 1.25µg/ml
Positive Control: HepG2 cell lysate

PSMC3IP antibody - middle region - References

Enomoto, R., (2006) J. Biol. Chem. 281(9), 5575-5581 Reconstitution and Storage: For short term use, store at 2-8°C up to 1 week. For long term storage, store at -20°C in small aliquots to prevent freeze-thaw cycles.