

**PSMD8 antibody - C-terminal region**  
**Rabbit Polyclonal Antibody**  
**Catalog # AI12891****Specification**

---

**PSMD8 antibody - C-terminal region - Product Information**

Application	WB
Primary Accession	<a href="#">P48556</a>
Other Accession	<a href="#">P48556</a> , <a href="#">AAV38494</a>
Reactivity	Human, Mouse, Rat, Rabbit, Pig, Horse, Bovine, Guinea Pig, Dog
Predicted	Human, Mouse, Rat, Horse, Bovine, Guinea Pig, Dog
Host	Rabbit
Clonality	Polyclonal
Calculated MW	27kDa KDa

**PSMD8 antibody - C-terminal region - Additional Information****Gene ID** 5714**Alias Symbol** HIP6, HYPF, MGC1660, Nin1p, Rpn12, S14, p31**Other Names**

26S proteasome non-ATPase regulatory subunit 8, 26S proteasome regulatory subunit RPN12, 26S proteasome regulatory subunit S14, p31, PSMD8

**Format**

Liquid. Purified antibody supplied in 1x PBS buffer with 0.09% (w/v) sodium azide and 2% sucrose.

**Reconstitution & Storage**

Add 50 ul of distilled water. Final anti-PSMD8 antibody concentration is 1 mg/ml in PBS buffer with 2% sucrose. For longer periods of storage, store at 20°C. Avoid repeat freeze-thaw cycles.

**Precautions**

PSMD8 antibody - C-terminal region is for research use only and not for use in diagnostic or therapeutic procedures.

**PSMD8 antibody - C-terminal region - Protein Information****Name** PSMD8**Function**

Component of the 26S proteasome, a multiprotein complex involved in the ATP-dependent degradation of ubiquitinated proteins. This complex plays a key role in the maintenance of protein homeostasis by removing misfolded or damaged proteins, which could impair cellular functions, and by removing proteins whose functions are no longer required. Therefore, the proteasome participates in numerous cellular processes, including cell cycle progression, apoptosis, or DNA

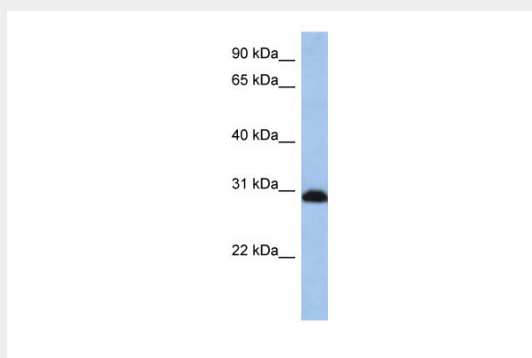
damage repair.

### **PSMD8 antibody - C-terminal region - Protocols**

Provided below are standard protocols that you may find useful for product applications.

- [Western Blot](#)
- [Blocking Peptides](#)
- [Dot Blot](#)
- [Immunohistochemistry](#)
- [Immunofluorescence](#)
- [Immunoprecipitation](#)
- [Flow Cytometry](#)
- [Cell Culture](#)

### **PSMD8 antibody - C-terminal region - Images**



WB Suggested Anti-PSMD8 Antibody Titration: 0.2-1  $\mu$ g/ml  
Positive Control: HepG2 cell lysate