

SPATA9 antibody - N-terminal region
Rabbit Polyclonal Antibody
Catalog # AI13116**Specification**

SPATA9 antibody - N-terminal region - Product Information

Application	WB
Primary Accession	O9BWV2
Other Accession	NM_031952 , NP_114158
Reactivity	Human, Pig, Horse, Bovine, Dog
Predicted	Pig, Dog
Host	Rabbit
Clonality	Polyclonal
Calculated MW	29kDa KDa

SPATA9 antibody - N-terminal region - Additional Information**Gene ID** 83890**Alias Symbol** FLJ35906, NYD-SP16**Other Names**

Spermatogenesis-associated protein 9, Testis development protein NYD-SP16, SPATA9

Format

Liquid. Purified antibody supplied in 1x PBS buffer with 0.09% (w/v) sodium azide and 2% sucrose.

Reconstitution & Storage

Add 50 ul of distilled water. Final anti-SPATA9 antibody concentration is 1 mg/ml in PBS buffer with 2% sucrose. For longer periods of storage, store at 20°C. Avoid repeat freeze-thaw cycles.

Precautions

SPATA9 antibody - N-terminal region is for research use only and not for use in diagnostic or therapeutic procedures.

SPATA9 antibody - N-terminal region - Protein Information**Name** SPATA9**Function**

May play a role in testicular development/spermatogenesis and may be an important factor in male infertility.

Cellular Location

Membrane; Single-pass membrane protein

Tissue Location

Highly expressed in testes and pancreas. Low levels found in the heart, lungs, and brain. Very low expression detected in the placenta. No expression seen in skeletal muscle, liver, kidney, thymus,

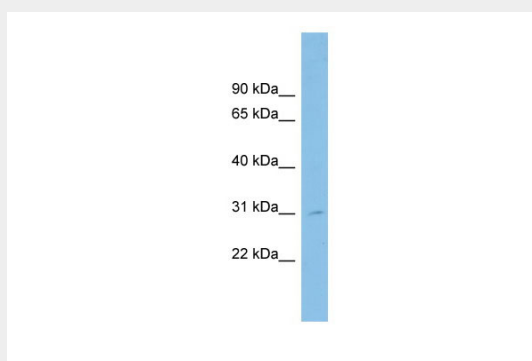
small intestine, colons, spleen, leukocytes, prostate gland, and ovary. In the adult testes, expression was about 6.44-fold higher than in the embryo testes. No expression in testes of patients with Sertoli-cell-only syndrome. In patients with arrest at spermatogonium and primary spermatocyte stages, no expression was detected. In patients with arrest at the spermatid stage, expression level was weak or absent. Variable expression was seen in patients with spermatogenic arrest.

SPATA9 antibody - N-terminal region - Protocols

Provided below are standard protocols that you may find useful for product applications.

- [Western Blot](#)
- [Blocking Peptides](#)
- [Dot Blot](#)
- [Immunohistochemistry](#)
- [Immunofluorescence](#)
- [Immunoprecipitation](#)
- [Flow Cytometry](#)
- [Cell Culture](#)

SPATA9 antibody - N-terminal region - Images



WB Suggested Anti-SPATA9 Antibody Titration: 0.2-1 µg/ml
ELISA Titer: 1:12500
Positive Control: U937 cell lysate

SPATA9 antibody - N-terminal region - References

Cheng L.J., et al. Biol. Reprod. 68:190-198(2003).
Ota T., et al. Nat. Genet. 36:40-45(2004).