

Ints12 Antibody - C-terminal region
Rabbit Polyclonal Antibody
Catalog # AI13281**Specification**

Ints12 Antibody - C-terminal region - Product Information

Application	WB
Primary Accession	Q68FR3
Other Accession	NM_001007640 , NP_001007641
Reactivity	Human, Mouse, Rat, Rabbit, Horse, Bovine, Guinea Pig, Dog
Predicted	Human, Mouse, Rat, Rabbit, Pig, Horse, Bovine, Guinea Pig, Dog
Host	Rabbit
Clonality	Polyclonal
Calculated MW	50kDa KDa

Ints12 Antibody - C-terminal region - Additional Information**Gene ID** 295448**Alias Symbol** Phf22**Other Names**

Integrator complex subunit 12, Int12, PHD finger protein 22, Ints12, Phf22

Format

Liquid. Purified antibody supplied in 1x PBS buffer with 0.09% (w/v) sodium azide and 2% sucrose.

Reconstitution & Storage

Add 50 µl of distilled water. Final Anti-Ints12 antibody concentration is 1 mg/ml in PBS buffer with 2% sucrose. For longer periods of storage, store at -20°C. Avoid repeat freeze-thaw cycles.

Precautions

Ints12 Antibody - C-terminal region is for research use only and not for use in diagnostic or therapeutic procedures.

Ints12 Antibody - C-terminal region - Protein Information**Name** Ints12**Synonyms** Phf22**Function**

Component of the Integrator complex, a complex involved in the small nuclear RNAs (snRNA) U1 and U2 transcription and in their 3'-box-dependent processing. The Integrator complex is associated with the C-terminal domain (CTD) of RNA polymerase II largest subunit (POLR2A) and is recruited to the U1 and U2 snRNAs genes. Mediates recruitment of cytoplasmic dynein to the nuclear envelope, probably as component of the INT complex.

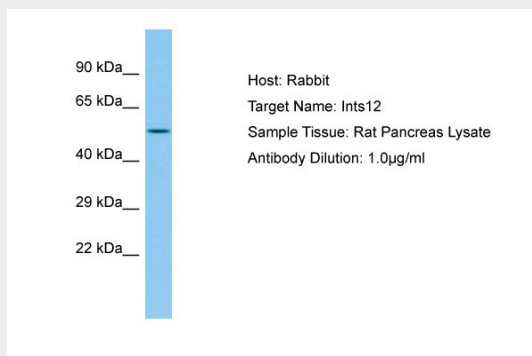
Cellular Location

Nucleus {ECO:0000250|UniProtKB:Q96CB8}.

Ints12 Antibody - C-terminal region - Protocols

Provided below are standard protocols that you may find useful for product applications.

- [Western Blot](#)
- [Blocking Peptides](#)
- [Dot Blot](#)
- [Immunohistochemistry](#)
- [Immunofluorescence](#)
- [Immunoprecipitation](#)
- [Flow Cytometry](#)
- [Cell Culture](#)

Ints12 Antibody - C-terminal region - Images

Host: Rabbit
Target Name: Ints12
Sample Tissue: Rat Pancreas lysates
Antibody Dilution: 1.0µg/ml