

Ik Antibody - C-terminal region
Rabbit Polyclonal Antibody
Catalog # AI13293**Specification**

Ik Antibody - C-terminal region - Product Information

Application	WB
Primary Accession	O9Z1M8
Other Accession	NM_011879 , NP_036009
Reactivity	Human, Mouse, Rat, Rabbit, Pig, Horse, Bovine, Guinea Pig, Dog
Predicted	Human, Mouse, Rat, Rabbit, Pig, Horse, Bovine, Guinea Pig, Dog
Host	Rabbit
Clonality	Polyclonal
Calculated MW	65kDa KDa

Ik Antibody - C-terminal region - Additional Information**Gene ID** 24010

Alias Symbol	MuRED
Other Names	
Protein Red, Cytokine IK, IK factor, Protein RER, Ik, Red, Rer	

Format

Liquid. Purified antibody supplied in 1x PBS buffer with 0.09% (w/v) sodium azide and 2% sucrose.

Reconstitution & Storage

Add 50 ul of distilled water. Final anti-Ik antibody concentration is 1 mg/ml in PBS buffer with 2% sucrose. For longer periods of storage, store at 20°C. Avoid repeat freeze-thaw cycles.

Precautions

Ik Antibody - C-terminal region is for research use only and not for use in diagnostic or therapeutic procedures.

Ik Antibody - C-terminal region - Protein Information**Name** Ik**Synonyms** Red, Rer**Function**

Involved in pre-mRNA splicing as a component of the spliceosome. Auxiliary spliceosomal protein that regulates selection of alternative splice sites in a small set of target pre-mRNA species. Required for normal mitotic cell cycle progression. Recruits MAD1L1 and MAD2L1 to kinetochores, and is required to trigger the spindle assembly checkpoint. Required for normal accumulation of SMU1.

Cellular Location

Nucleus {ECO:0000250|UniProtKB:Q13123}. Nucleus, nucleoplasm {ECO:0000250|UniProtKB:Q13123}. Chromosome {ECO:0000250|UniProtKB:Q13123}. Cytoplasm, cytoskeleton, spindle pole {ECO:0000250|UniProtKB:Q13123}. Note=Predominantly present throughout the nucleoplasm during prometaphase, metaphase and anaphase. Is also detected in nuclear foci that are not identical with Cajal bodies Starts to accumulate at chromosomes during telophase, and is nearly exclusively associated with chromosomes in newly divided cells Colocalizes with MAD1L1 at mitotic spindle poles during metaphase and anaphase. {ECO:0000250|UniProtKB:Q13123}

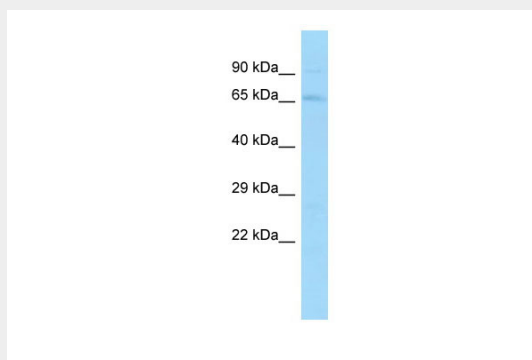
Tissue Location

Ubiquitous.

Ik Antibody - C-terminal region - Protocols

Provided below are standard protocols that you may find useful for product applications.

- [Western Blot](#)
- [Blocking Peptides](#)
- [Dot Blot](#)
- [Immunohistochemistry](#)
- [Immunofluorescence](#)
- [Immunoprecipitation](#)
- [Flow Cytometry](#)
- [Cell Culture](#)

Ik Antibody - C-terminal region - Images

Host: Rabbit
Target Name: Ik
Sample Tissue: Mouse Testis lysates
Antibody Dilution: 1.0µg/ml

Ik Antibody - C-terminal region - References

Assier E.,et al.Gene 230:145-154(1999).
Trinidad J.C.,et al.Mol. Cell. Proteomics 5:914-922(2006).
Park J.,et al.Mol. Cell 50:919-930(2013).