

**PLG antibody - middle region**  
**Rabbit Polyclonal Antibody**  
**Catalog # AI13303****Specification**

---

**PLG antibody - middle region - Product Information**

Application	WB
Primary Accession	<a href="#">Q5R8X6</a>
Other Accession	<a href="#">NM_000301</a> , <a href="#">NP_000292</a>
Reactivity	Human, Mouse, Rat, Rabbit, Pig, Dog
Predicted	Human, Mouse, Pig, Chicken
Host	Rabbit
Clonality	Polyclonal
Calculated MW	88kDa KDa

**PLG antibody - middle region - Additional Information****Gene ID** 100172984**Alias Symbol** **DKFZp779M0222****Other Names**

Plasminogen, 3.4.21.7, Plasmin heavy chain A, Activation peptide, Plasmin heavy chain A, short form, Plasmin light chain B, PLG

**Format**

Liquid. Purified antibody supplied in 1x PBS buffer with 0.09% (w/v) sodium azide and 2% sucrose.

**Reconstitution & Storage**

Add 50 ul of distilled water. Final anti-PLG antibody concentration is 1 mg/ml in PBS buffer with 2% sucrose. For longer periods of storage, store at 20°C. Avoid repeat freeze-thaw cycles.

**Precautions**

PLG antibody - middle region is for research use only and not for use in diagnostic or therapeutic procedures.

**PLG antibody - middle region - Protein Information****Name** PLG**Function**

Plasmin dissolves the fibrin of blood clots and acts as a proteolytic factor in a variety of other processes including embryonic development, tissue remodeling, tumor invasion, and inflammation. In ovulation, weakens the walls of the Graafian follicle. It activates the urokinase-type plasminogen activator, collagenases and several complement zymogens, such as C1 and C5. Cleavage of fibronectin and laminin leads to cell detachment and apoptosis. Also cleaves fibrin, thrombospondin and von Willebrand factor. Its role in tissue remodeling and tumor invasion may be modulated by CSPG4. Binds to cells (By similarity).

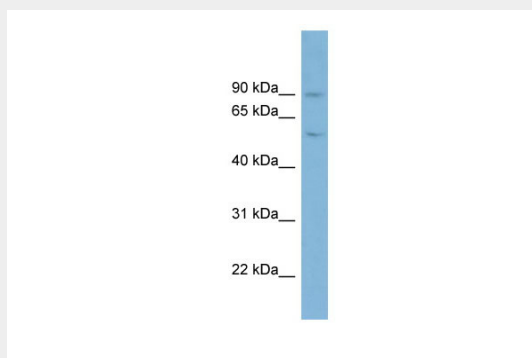
**Cellular Location**

Secreted. Note=Locates to the cell surface where it is proteolytically cleaved to produce the active plasmin. Interaction with HRG tethers it to the cell surface (By similarity).

**PLG antibody - middle region - Protocols**

Provided below are standard protocols that you may find useful for product applications.

- [Western Blot](#)
- [Blocking Peptides](#)
- [Dot Blot](#)
- [Immunohistochemistry](#)
- [Immunofluorescence](#)
- [Immunoprecipitation](#)
- [Flow Cytometry](#)
- [Cell Culture](#)

**PLG antibody - middle region - Images**

WB Suggested Anti-PLG Antibody Titration: 0.2-1 µg/ml

ELISA Titer: 1:1562500

Positive Control: PANC1 cell lysate

PLG is supported by BioGPS gene expression data to be expressed in PANC1