

**Dusp7 Antibody - N-terminal region**  
**Rabbit Polyclonal Antibody**  
**Catalog # AI13353****Specification**

---

**Dusp7 Antibody - N-terminal region - Product Information**

Application	WB
Primary Accession	<a href="#">Q63340</a>
Other Accession	<a href="#">XM_238551</a> , <a href="#">XP_238551</a>
Reactivity	Human, Mouse, Rat, Rabbit, Pig, Horse, Bovine, Guinea Pig, Dog
Predicted	Human, Mouse, Rat, Rabbit, Pig, Horse, Bovine, Guinea Pig, Dog
Host	Rabbit
Clonality	Polyclonal
Calculated MW	31kDa kDa

**Dusp7 Antibody - N-terminal region - Additional Information****Gene ID** 300980**Alias Symbol** **mkp-X****Other Names**

Dual specificity protein phosphatase 7, 3.1.3.16, 3.1.3.48, Dual specificity protein phosphatase MKP-X, Dusp7, Mkpx

**Format**

Liquid. Purified antibody supplied in 1x PBS buffer with 0.09% (w/v) sodium azide and 2% sucrose.

**Reconstitution & Storage**

Add 50 ul of distilled water. Final anti-Dusp7 antibody concentration is 1 mg/ml in PBS buffer with 2% sucrose. For longer periods of storage, store at 20°C. Avoid repeat freeze-thaw cycles.

**Precautions**

Dusp7 Antibody - N-terminal region is for research use only and not for use in diagnostic or therapeutic procedures.

**Dusp7 Antibody - N-terminal region - Protein Information****Name** Dusp7 {ECO:0000312|RGD:735026}**Function**

Dual specificity protein phosphatase (By similarity). Shows high activity towards MAPK1/ERK2 (By similarity). Also has lower activity towards MAPK14 and MAPK8 (By similarity). In arrested oocytes, plays a role in meiotic resumption. Promotes nuclear envelope breakdown and activation of the CDK1/Cyclin-B complex in oocytes, probably by dephosphorylating and inactivating the conventional protein kinase C (cPKC) isozyme PRKCB. May also inactivate PRKCA and/or PRKCG. Also important in oocytes for normal chromosome alignment on the metaphase plate and

progression to anaphase, where it might regulate activity of the spindle-assembly checkpoint (SAC) complex.

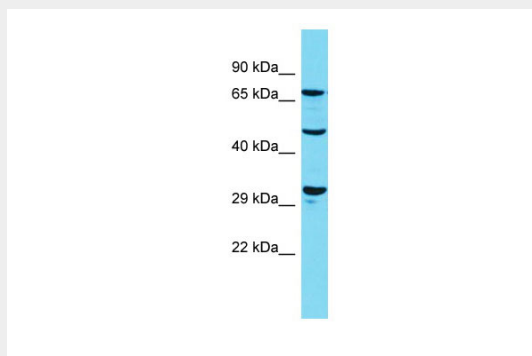
**Cellular Location**

Cytoplasm {ECO:0000250|UniProtKB:Q16829}.

**Dusp7 Antibody - N-terminal region - Protocols**

Provided below are standard protocols that you may find useful for product applications.

- [Western Blot](#)
- [Blocking Peptides](#)
- [Dot Blot](#)
- [Immunohistochemistry](#)
- [Immunofluorescence](#)
- [Immunoprecipitation](#)
- [Flow Cytometry](#)
- [Cell Culture](#)

**Dusp7 Antibody - N-terminal region - Images**

Host: Rabbit

Target Name: Dusp7

Sample Tissue: Rat Pancreas lysates

Antibody Dilution: 1.0µg/ml

**Dusp7 Antibody - N-terminal region - References**

Muda M., et al. J. Biol. Chem. 271:4319-4326(1996).