

Slu7 antibody - middle region
Rabbit Polyclonal Antibody
Catalog # AI13382**Specification**

Slu7 antibody - middle region - Product Information

Application	WB
Primary Accession	Q8BHJ9
Other Accession	NM_148673 , NP_683514
Reactivity	Human, Mouse, Rat, Rabbit, Pig, Horse, Bovine, Guinea Pig, Dog
Predicted	Human, Mouse, Rat, Rabbit, Chicken, Horse, Bovine, Guinea Pig, Dog
Host	Rabbit
Clonality	Polyclonal
Calculated MW	64kDa KDa

Slu7 antibody - middle region - Additional Information**Gene ID** 193116**Alias Symbol** AU018913, D11Erttd730e, D3Bwg0878e, MGC31026, RP23-26M1.8**Other Names**

Pre-mRNA-splicing factor SLU7, Slu7, D11Erttd730e

Format

Liquid. Purified antibody supplied in 1x PBS buffer with 0.09% (w/v) sodium azide and 2% sucrose.

Reconstitution & Storage

Add 50 ul of distilled water. Final anti-Slu7 antibody concentration is 1 mg/ml in PBS buffer with 2% sucrose. For longer periods of storage, store at 20°C. Avoid repeat freeze-thaw cycles.

Precautions

Slu7 antibody - middle region is for research use only and not for use in diagnostic or therapeutic procedures.

Slu7 antibody - middle region - Protein Information**Name** Slu7**Synonyms** D11Erttd730e**Function**

Required for pre-mRNA splicing as component of the spliceosome. Participates in the second catalytic step of pre-mRNA splicing, when the free hydroxyl group of exon I attacks the 3'-splice site to generate spliced mRNA and the excised lariat intron. Required for holding exon 1 properly in the spliceosome and for correct AG identification when more than one possible AG exists in

3'-splicing site region. May be involved in the activation of proximal AG. Probably also involved in alternative splicing regulation.

Cellular Location

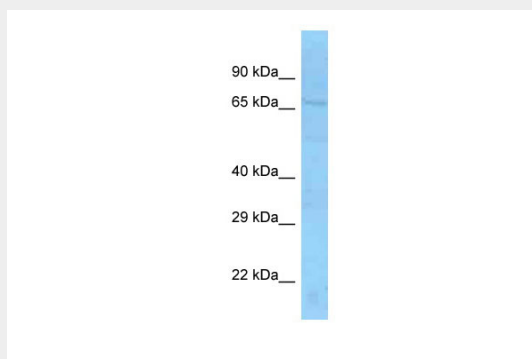
Nucleus {ECO:0000250|UniProtKB:O95391}. Nucleus speckle {ECO:0000250|UniProtKB:O95391}. Cytoplasm {ECO:0000250|UniProtKB:O95391}. Note=Predominantly nuclear. Shuttling between the nucleus and the cytoplasm is regulated by the CCHC-type zinc finger. Upon UV-C stress stimulus, the nuclear concentration of the protein decreases, affecting alternative splicing. Translocates from the nucleus to the cytoplasm after heat shock cell treatment Accumulates in cytoplasmic vesicle-like organelles after heat shock treatment, which may represent stress granules {ECO:0000250|UniProtKB:O95391}

Slu7 antibody - middle region - Protocols

Provided below are standard protocols that you may find useful for product applications.

- [Western Blot](#)
- [Blocking Peptides](#)
- [Dot Blot](#)
- [Immunohistochemistry](#)
- [Immunofluorescence](#)
- [Immunoprecipitation](#)
- [Flow Cytometry](#)
- [Cell Culture](#)

Slu7 antibody - middle region - Images



WB Suggested Anti-Slu7 Antibody Titration: 1.0 µg/ml
Positive Control: Mouse Kidney

Slu7 antibody - middle region - References

Carninci P., et al. Science 309:1559-1563(2005).
Church D.M., et al. PLoS Biol. 7:E1000112-E1000112(2009).
Trost M., et al. Immunity 30:143-154(2009).