

Smpdl3a antibody - N-terminal region
Rabbit Polyclonal Antibody
Catalog # AI13391**Specification**

Smpdl3a antibody - N-terminal region - Product Information

Application	WB
Primary Accession	P70158
Other Accession	NM_020561 , NP_065586
Reactivity	Human, Mouse, Rat, Rabbit, Horse, Bovine, Guinea Pig, Dog
Predicted Host	Mouse, Rabbit, Pig, Horse, Guinea Pig, Dog
Clonality	Rabbit
Calculated MW	Polyclonal 49kDa KDa

Smpdl3a antibody - N-terminal region - Additional Information**Gene ID** 57319**Alias Symbol** 0610010C24Rik, AI529588, ASM3A, ASML3, ASML3A**Other Names**

Acid sphingomyelinase-like phosphodiesterase 3a, ASM-like phosphodiesterase 3a, 3.1.4.-, Smpdl3a, Asml3a

Format

Liquid. Purified antibody supplied in 1x PBS buffer with 0.09% (w/v) sodium azide and 2% sucrose.

Reconstitution & Storage

Add 50 ul of distilled water. Final anti-Smpdl3a antibody concentration is 1 mg/ml in PBS buffer with 2% sucrose. For longer periods of storage, store at 20°C. Avoid repeat freeze-thaw cycles.

Precautions

Smpdl3a antibody - N-terminal region is for research use only and not for use in diagnostic or therapeutic procedures.

Smpdl3a antibody - N-terminal region - Protein Information**Name** Smpdl3a {ECO:0000303|PubMed:25288789, ECO:0000312|MGI:MGI:1931437}**Function**

Cyclic-nucleotide phosphodiesterase that acts as a negative regulator of innate immunity by mediating degradation of 2',3'-cGAMP, thereby inhibiting the cGAS-STING signaling (PubMed:37890481). Specifically linearizes 2',3'-cGAMP into 2'5'-bond pGpA and further hydrolyzes pGpA to produce GpA (By similarity). Also has in vitro nucleotide phosphodiesterase activity with nucleoside triphosphates, such as ATP (PubMed:26792860).

target=" _blank">26792860). Has in vitro activity with p- nitrophenyl-TMP (By similarity). Has lower activity with nucleoside diphosphates, and no activity with nucleoside monophosphates (By similarity). Has in vitro activity with CDP-choline, giving rise to CMP and phosphocholine (By similarity). Has in vitro activity with CDP- ethanolamine (By similarity). Does not have sphingomyelin phosphodiesterase activity (By similarity).

Cellular Location

Secreted

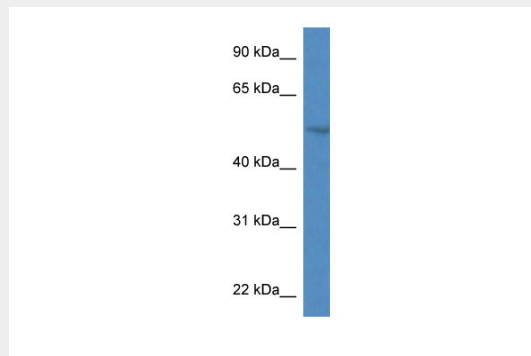
Tissue Location

Detected in blood serum (at protein level).

Smpdl3a antibody - N-terminal region - Protocols

Provided below are standard protocols that you may find useful for product applications.

- [Western Blot](#)
- [Blocking Peptides](#)
- [Dot Blot](#)
- [Immunohistochemistry](#)
- [Immunofluorescence](#)
- [Immunoprecipitation](#)
- [Flow Cytometry](#)
- [Cell Culture](#)

Smpdl3a antibody - N-terminal region - Images

WB Suggested Anti-Smpdl3a Antibody Titration: 1.0 µg/ml
Positive Control: Mouse Heart

Smpdl3a antibody - N-terminal region - References

Hofmann K.,et al.Submitted (SEP-1996) to the EMBL/GenBank/DDBJ databases.
Carninci P.,et al.Science 309:1559-1563(2005).
Mural R.J.,et al.Submitted (JUL-2005) to the EMBL/GenBank/DDBJ databases.