

VPS26B antibody - C-terminal region
Rabbit Polyclonal Antibody
Catalog # AI13415**Specification**

VPS26B antibody - C-terminal region - Product Information

Application	WB
Primary Accession	Q4G0F5
Other Accession	NM_052875 , NP_443107
Reactivity	Human, Mouse, Rat, Rabbit, Pig, Goat, Horse, Yeast, Bovine, Guinea Pig, Dog
Predicted	Human, Rat, Rabbit, Pig, Chicken, Horse, Bovine, Dog
Host	Rabbit
Clonality	Polyclonal
Calculated MW	39kDa kDa

VPS26B antibody - C-terminal region - Additional Information**Gene ID** 112936**Alias Symbol** MGC10485, Pep8b**Other Names**

Vacuolar protein sorting-associated protein 26B, Vesicle protein sorting 26B, VPS26B

Format

Liquid. Purified antibody supplied in 1x PBS buffer with 0.09% (w/v) sodium azide and 2% sucrose.

Reconstitution & Storage

Add 50 ul of distilled water. Final anti-VPS26B antibody concentration is 1 mg/ml in PBS buffer with 2% sucrose. For longer periods of storage, store at 20°C. Avoid repeat freeze-thaw cycles.

Precautions

VPS26B antibody - C-terminal region is for research use only and not for use in diagnostic or therapeutic procedures.

VPS26B antibody - C-terminal region - Protein Information**Name** VPS26B**Function**

Acts as a component of the retromer cargo-selective complex (CSC). The CSC is believed to be the core functional component of retromer or respective retromer complex variants acting to prevent missorting of selected transmembrane cargo proteins into the lysosomal degradation pathway. The recruitment of the CSC to the endosomal membrane involves RAB7A and SNX3. The SNX-BAR retromer mediates retrograde transport of cargo proteins from endosomes to the trans- Golgi network (TGN) and is involved in endosome-to-plasma membrane transport for cargo protein recycling. The SNX3-retromer mediates the retrograde transport of WLS distinct from the SNX-BAR

retromer pathway. The SNX27-retromer is believed to be involved in endosome-to-plasma membrane trafficking and recycling of a broad spectrum of cargo proteins. The CSC seems to act as recruitment hub for other proteins, such as the WASH complex and TBC1D5. May be involved in retrograde transport of SORT1 but not of IGF2R. Acts redundantly with VSP26A in SNX-27 mediated endocytic recycling of SLC2A1/GLUT1 (By similarity).

Cellular Location

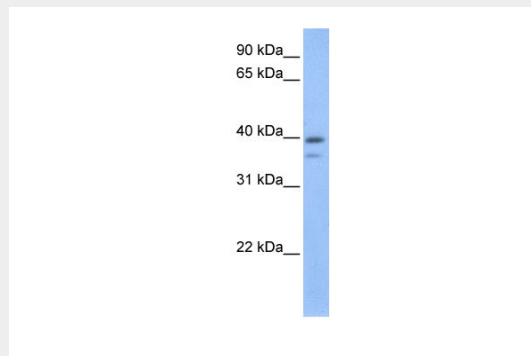
Cytoplasm {ECO:0000250|UniProtKB:Q8C0E2}. Membrane; Peripheral membrane protein {ECO:0000250|UniProtKB:Q8C0E2}. Early endosome {ECO:0000250|UniProtKB:Q8C0E2}. Late endosome {ECO:0000250|UniProtKB:Q8C0E2}. Note=Localizes to early and late endosomal structures (By similarity). {ECO:0000250|UniProtKB:Q8C0E2}

VPS26B antibody - C-terminal region - Protocols

Provided below are standard protocols that you may find useful for product applications.

- [Western Blot](#)
- [Blocking Peptides](#)
- [Dot Blot](#)
- [Immunohistochemistry](#)
- [Immunofluorescence](#)
- [Immunoprecipitation](#)
- [Flow Cytometry](#)
- [Cell Culture](#)

VPS26B antibody - C-terminal region - Images



WB Suggested Anti-VPS26B Antibody Titration: 0.2-1 µg/ml
Positive Control: Human brain

VPS26B antibody - C-terminal region - References

Kim N.-S., et al. Submitted (NOV-2001) to the EMBL/GenBank/DDBJ databases.
Dephoure N., et al. Proc. Natl. Acad. Sci. U.S.A. 105:10762-10767(2008).
Gauci S., et al. Anal. Chem. 81:4493-4501(2009).
Mayya V., et al. Sci. Signal. 2:RA46-RA46(2009).
Olsen J.V., et al. Sci. Signal. 3:RA3-RA3(2010).