

STAG3 antibody - middle region
Rabbit Polyclonal Antibody
Catalog # AI13597**Specification**

STAG3 antibody - middle region - Product Information

Application	WB
Primary Accession	O9UJ98
Other Accession	NM_012447 , NP_036579
Reactivity	Human
Predicted	Human
Host	Rabbit
Clonality	Polyclonal
Calculated MW	135kDa KDa

STAG3 antibody - middle region - Additional Information**Gene ID** 10734**Other Names**

Cohesin subunit SA-3, SCC3 homolog 3, Stromal antigen 3, Stromalin-3, STAG3

Format

Liquid. Purified antibody supplied in 1x PBS buffer with 0.09% (w/v) sodium azide and 2% sucrose.

Reconstitution & Storage

Add 50 ul of distilled water. Final anti-STAG3 antibody concentration is 1 mg/ml in PBS buffer with 2% sucrose. For longer periods of storage, store at 20°C. Avoid repeat freeze-thaw cycles.

Precautions

STAG3 antibody - middle region is for research use only and not for use in diagnostic or therapeutic procedures.

STAG3 antibody - middle region - Protein Information**Name** STAG3**Function**

Meiosis specific component of cohesin complex. The cohesin complex is required for the cohesion of sister chromatids after DNA replication. The cohesin complex apparently forms a large proteinaceous ring within which sister chromatids can be trapped. At anaphase, the complex is cleaved and dissociates from chromatin, allowing sister chromatids to segregate. The meiosis-specific cohesin complex probably replaces mitosis specific cohesin complex when it dissociates from chromatin during prophase I.

Cellular Location

Nucleus {ECO:0000255|PROSITE-ProRule:PRU00750, ECO:0000269|PubMed:12034751}.
Chromosome Chromosome, centromere. Note=Associates with chromatin. In prophase I stage of

meiosis, it is found along the axial elements of synaptonemal complexes. In late-pachytene-diplotene, the bulk of protein dissociates from the chromosome arms probably because of phosphorylation by PLK1, except at centromeres, where cohesin complexes remain. It however remains chromatin associated at the centromeres up to metaphase I. During anaphase I, it probably dissociates from centromeres, allowing chromosomes segregation

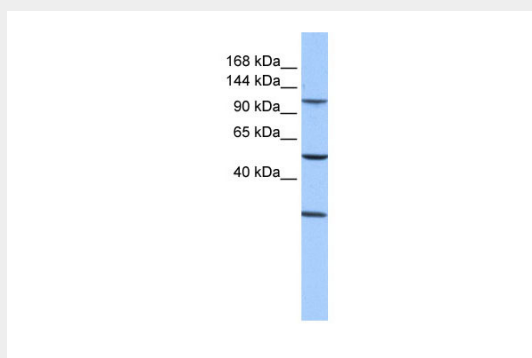
Tissue Location

Testis specific.

STAG3 antibody - middle region - Protocols

Provided below are standard protocols that you may find useful for product applications.

- [Western Blot](#)
- [Blocking Peptides](#)
- [Dot Blot](#)
- [Immunohistochemistry](#)
- [Immunofluorescence](#)
- [Immunoprecipitation](#)
- [Flow Cytometry](#)
- [Cell Culture](#)

STAG3 antibody - middle region - Images

WB Suggested Anti-STAG3 Antibody Titration: 0.2-1 µg/ml

Positive Control: 721_B cell lysate

STAG3 is supported by BioGPS gene expression data to be expressed in 721_B

STAG3 antibody - middle region - References

- Pezzi N., et al. FASEB J. 14:581-592(2000).
Bechtel S., et al. BMC Genomics 8:399-399(2007).
Ota T., et al. Nat. Genet. 36:40-45(2004).
Hillier L.W., et al. Nature 424:157-164(2003).
Mural R.J., et al. Submitted (SEP-2005) to the EMBL/GenBank/DBJ databases.