

ITGB3BP antibody - N-terminal region
Rabbit Polyclonal Antibody
Catalog # AI13726**Specification**

ITGB3BP antibody - N-terminal region - Product Information

Application	WB
Primary Accession	Q13352
Other Accession	NM_014288 , NP_055103
Reactivity	Human
Predicted	Human
Host	Rabbit
Clonality	Polyclonal
Calculated MW	20kDa KDa

ITGB3BP antibody - N-terminal region - Additional Information**Gene ID** 23421**Alias Symbol** **CENP-R, CENPR, HSU37139, NRIF3, TAP20**
Other Names

Centromere protein R, CENP-R, Beta-3-endonexin, Integrin beta-3-binding protein, Nuclear receptor-interacting factor 3, ITGB3BP, CENPR, NRIF3

Format

Liquid. Purified antibody supplied in 1x PBS buffer with 0.09% (w/v) sodium azide and 2% sucrose.

Reconstitution & Storage

Add 50 ul of distilled water. Final anti-ITGB3BP antibody concentration is 1 mg/ml in PBS buffer with 2% sucrose. For longer periods of storage, store at 20°C. Avoid repeat freeze-thaw cycles.

Precautions

ITGB3BP antibody - N-terminal region is for research use only and not for use in diagnostic or therapeutic procedures.

ITGB3BP antibody - N-terminal region - Protein Information**Name** ITGB3BP**Synonyms** CENPR, NRIF3**Function**

Transcription coregulator that can have both coactivator and corepressor functions. Isoform 1, but not other isoforms, is involved in the coactivation of nuclear receptors for retinoid X (RXRs) and thyroid hormone (TRs) in a ligand-dependent fashion. In contrast, it does not coactivate nuclear receptors for retinoic acid, vitamin D, progesterone receptor, nor glucocorticoid. Acts as a coactivator for estrogen receptor alpha. Acts as a transcriptional corepressor via its interaction with the NFKB1 NF-kappa-B subunit, possibly by interfering with the transactivation domain of

NFKB1. Induces apoptosis in breast cancer cells, but not in other cancer cells, via a caspase-2 mediated pathway that involves mitochondrial membrane permeabilization but does not require other caspases. May also act as an inhibitor of cyclin A- associated kinase. Also acts a component of the CENPA-CAD (nucleosome distal) complex, a complex recruited to centromeres which is involved in assembly of kinetochore proteins, mitotic progression and chromosome segregation. May be involved in incorporation of newly synthesized CENPA into centromeres via its interaction with the CENPA-NAC complex.

Cellular Location

[Isoform 1]: Nucleus. Chromosome, centromere. Chromosome, centromere, kinetochore [Isoform 3]: Nucleus. Cytoplasm. Note=Isoform 3 is predominantly nuclear and weakly cytoplasmic

Tissue Location

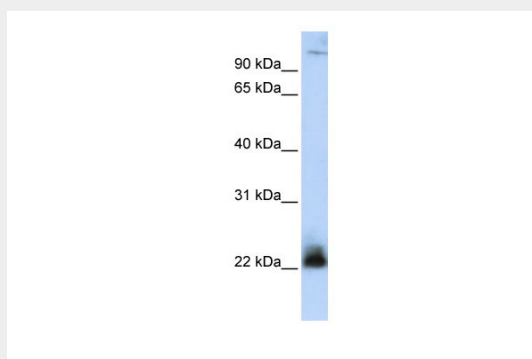
Widely expressed. Expressed in spleen, thymus, prostate, ovary, small intestine and white blood cells. Highly expressed in testis and colon. Isoform 4 is expressed in platelets, lymphocytes and granulocytes.

ITGB3BP antibody - N-terminal region - Protocols

Provided below are standard protocols that you may find useful for product applications.

- [Western Blot](#)
- [Blocking Peptides](#)
- [Dot Blot](#)
- [Immunohistochemistry](#)
- [Immunofluorescence](#)
- [Immunoprecipitation](#)
- [Flow Cytometry](#)
- [Cell Culture](#)

ITGB3BP antibody - N-terminal region - Images



WB Suggested Anti-ITGB3BP Antibody Titration: 0.2-1 µg/ml

ELISA Titer: 1:62500

Positive Control: MCF7 cell lysate

ITGB3BP antibody - N-terminal region - References

- Shattil S.J.,et al.J. Cell Biol. 131:807-816(1995).
Li D.,et al.Mol. Cell. Biol. 19:7191-7202(1999).
Ota T.,et al.Nat. Genet. 36:40-45(2004).
Gregory S.G.,et al.Nature 441:315-321(2006).

Fujimoto T.-T., et al. Thromb. Res. 105:63-70(2002).