

Ska1 antibody - middle region
Rabbit Polyclonal Antibody
Catalog # AI13799**Specification**

Ska1 antibody - middle region - Product Information

Application	WB
Primary Accession	O9CPV1
Other Accession	NM_025581 , NP_079857
Reactivity	Human, Mouse, Rat, Rabbit, Pig, Horse, Bovine, Dog
Predicted Host	Human, Mouse, Rat, Rabbit, Bovine, Dog
Clonality	Rabbit
Calculated MW	Polyclonal 28kDa KDa

Ska1 antibody - middle region - Additional Information**Gene ID** 66468**Alias Symbol** 2810433K01Rik, AV117428**Other Names**

Spindle and kinetochore-associated protein 1, Ska1

Format

Liquid. Purified antibody supplied in 1x PBS buffer with 0.09% (w/v) sodium azide and 2% sucrose.

Reconstitution & Storage

Add 50 ul of distilled water. Final anti-Ska1 antibody concentration is 1 mg/ml in PBS buffer with 2% sucrose. For longer periods of storage, store at 20°C. Avoid repeat freeze-thaw cycles.

Precautions

Ska1 antibody - middle region is for research use only and not for use in diagnostic or therapeutic procedures.

Ska1 antibody - middle region - Protein Information**Name** Ska1**Function**

Component of the SKA1 complex, a microtubule-binding subcomplex of the outer kinetochore that is essential for proper chromosome segregation. Required for timely anaphase onset during mitosis, when chromosomes undergo bipolar attachment on spindle microtubules leading to silencing of the spindle checkpoint. The SKA1 complex is a direct component of the kinetochore-microtubule interface and directly associates with microtubules as oligomeric assemblies. The complex facilitates the processive movement of microspheres along a microtubule in a depolymerization-coupled manner. Affinity for microtubules is synergistically enhanced in the presence of the ndc-80 complex and may allow the ndc-80 complex to track

depolymerizing microtubules. In the complex, it mediates the interaction with microtubules.

Cellular Location

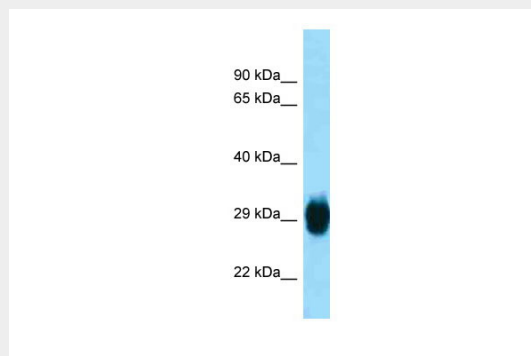
Cytoplasm, cytoskeleton, spindle {ECO:0000250|UniProtKB:Q96BD8}. Chromosome, centromere, kinetochore {ECO:0000250|UniProtKB:Q96BD8}. Note=Localizes to the outer kinetochore and spindle microtubules during mitosis in a NDC80 complex-dependent manner. Localizes to both the mitotic spindle and kinetochore- associated proteins. Associates with kinetochores following microtubule attachment from prometaphase, through mid-anaphase and then vanishes in telophase. {ECO:0000250|UniProtKB:Q96BD8}

Ska1 antibody - middle region - Protocols

Provided below are standard protocols that you may find useful for product applications.

- [Western Blot](#)
- [Blocking Peptides](#)
- [Dot Blot](#)
- [Immunohistochemistry](#)
- [Immunofluorescence](#)
- [Immunoprecipitation](#)
- [Flow Cytometry](#)
- [Cell Culture](#)

Ska1 antibody - middle region - Images



WB Suggested Anti-Ska1 Antibody Titration: 1.0 µg/ml
Positive Control: Mouse Pancreas

Ska1 antibody - middle region - References

Chatterjee B.,et al.Submitted (AUG-2006) to the EMBL/GenBank/DDBJ databases.
Carninci P.,et al.Science 309:1559-1563(2005).