

Tmem110 antibody - C-terminal region
Rabbit Polyclonal Antibody
Catalog # AI13874**Specification**

Tmem110 antibody - C-terminal region - Product Information

Application	WB
Primary Accession	Q3UF25
Other Accession	NM_198774 , NP_942069
Reactivity	Human, Mouse, Rat, Rabbit, Pig, Horse, Bovine, Guinea Pig, Dog
Predicted Host	Human, Pig, Chicken, Bovine, Dog
Clonality	Rabbit
Calculated MW	Polyclonal 32kDa KDa

Tmem110 antibody - C-terminal region - Additional Information**Gene ID** 69179**Alias Symbol** MGC108529, Tmem110
Other Names
Transmembrane protein 110, Tmem110**Format**

Liquid. Purified antibody supplied in 1x PBS buffer with 0.09% (w/v) sodium azide and 2% sucrose.

Reconstitution & Storage

Add 50 ul of distilled water. Final anti-Tmem110 antibody concentration is 1 mg/ml in PBS buffer with 2% sucrose. For longer periods of storage, store at 20°C. Avoid repeat freeze-thaw cycles.

Precautions

Tmem110 antibody - C-terminal region is for research use only and not for use in diagnostic or therapeutic procedures.

Tmem110 antibody - C-terminal region - Protein Information**Name** Stimat {ECO:0000250|UniProtKB:Q86TL2}**Function**

Acts as a regulator of store-operated Ca^{2+} entry (SOCE) at junctional sites that connect the endoplasmic reticulum (ER) and plasma membrane (PM), called ER-plasma membrane (ER-PM) junction or cortical ER. SOCE is a Ca^{2+} influx following depletion of intracellular Ca^{2+} stores. Acts by interacting with STIM1, promoting STIM1 conformational switch. Involved in STIM1 relocalization to ER-PM junctions. Contributes to the maintenance and reorganization of store-dependent ER-PM junctions.

Cellular Location

Endoplasmic reticulum membrane {ECO:0000250|UniProtKB:Q86TL2}; Multi-pass membrane protein {ECO:0000250|UniProtKB:Q86TL2}. Note=Colocalizes with STIM1 at ER- plasma membrane (ER-PM) junctions, also called cortical endoplasmic reticulum (ER), in store-depleted calcium cells. May translocate to ER- PM junctions in a STIM1-dependent manner in store-depleted cells {ECO:0000250|UniProtKB:Q86TL2}

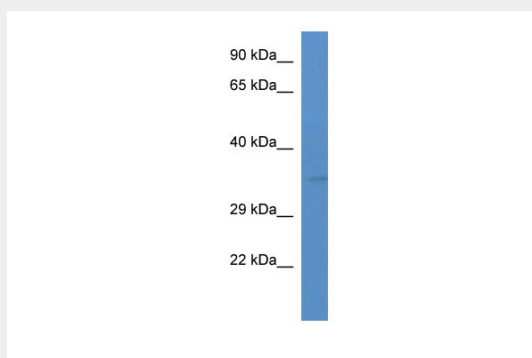
Tissue Location

Widely expressed..

Tmem110 antibody - C-terminal region - Protocols

Provided below are standard protocols that you may find useful for product applications.

- [Western Blot](#)
- [Blocking Peptides](#)
- [Dot Blot](#)
- [Immunohistochemistry](#)
- [Immunofluorescence](#)
- [Immunoprecipitation](#)
- [Flow Cytometry](#)
- [Cell Culture](#)

Tmem110 antibody - C-terminal region - Images

WB Suggested Anti-Tmem110 Antibody Titration: 1.0 µg/ml
Positive Control: Rat Liver

Tmem110 antibody - C-terminal region - References

Carninci P., et al. Science 309:1559-1563(2005).