

NOTCH2NL antibody - C-terminal region
Rabbit Polyclonal Antibody
Catalog # AI13885**Specification**

NOTCH2NL antibody - C-terminal region - Product Information

Application	WB
Primary Accession	Q7Z3S9
Other Accession	NM_203458 , NP_982283
Reactivity	Human
Predicted	Human
Host	Rabbit
Clonality	Polyclonal
Calculated MW	26kDa KDa

NOTCH2NL antibody - C-terminal region - Additional Information**Gene ID** 388677

Alias Symbol	N2N
--------------	-----

Other Names
Notch homolog 2 N-terminal-like protein, NOTCH2NL, N2N**Format**

Liquid. Purified antibody supplied in 1x PBS buffer with 0.09% (w/v) sodium azide and 2% sucrose.

Reconstitution & Storage

Add 50 ul of distilled water. Final anti-NOTCH2NL antibody concentration is 1 mg/ml in PBS buffer with 2% sucrose. For longer periods of storage, store at 20°C. Avoid repeat freeze-thaw cycles.

Precautions

NOTCH2NL antibody - C-terminal region is for research use only and not for use in diagnostic or therapeutic procedures.

NOTCH2NL antibody - C-terminal region - Protein Information**Name** NT2NA**Function**

Human-specific protein that promotes neural progenitor proliferation and evolutionary expansion of the brain neocortex by regulating the Notch signaling pathway (PubMed:29856954, PubMed:29856955, PubMed:29561261). Able to promote neural progenitor self-renewal, possibly by down-regulating neuronal differentiation genes, thereby delaying the differentiation of neuronal progenitors and leading to an overall final increase in neuronal production (PubMed:29856954). Acts by enhancing the Notch signaling pathway via two

different mechanisms that probably work in parallel to reach the same effect (PubMed:29856954). Enhances Notch signaling pathway in a non-cell-autonomous manner via direct interaction with NOTCH2 (PubMed:29856954). Also promotes Notch signaling pathway in a cell- autonomous manner through inhibition of cis DLL1-NOTCH2 interactions, which promotes neuronal differentiation (By similarity).

Cellular Location

Secreted. Cytoplasm

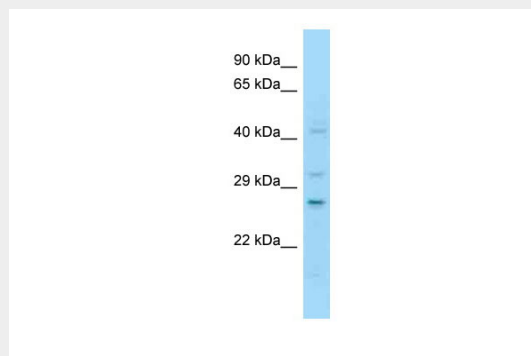
Tissue Location

Widely expressed with higher levels in leukocytes and lymph nodes (PubMed:14673143). Expressed in radial glia neural stem cells during cortical development (PubMed:29856954)

NOTCH2NL antibody - C-terminal region - Protocols

Provided below are standard protocols that you may find useful for product applications.

- [Western Blot](#)
- [Blocking Peptides](#)
- [Dot Blot](#)
- [Immunohistochemistry](#)
- [Immunofluorescence](#)
- [Immunoprecipitation](#)
- [Flow Cytometry](#)
- [Cell Culture](#)

NOTCH2NL antibody - C-terminal region - Images

WB Suggested Anti-NOTCH2NL Antibody Titration: 1.0 µg/ml

Positive Control: Jurkat Whole Cell
NOTCH2NL is supported by BioGPS gene expression data to be expressed in Jurkat

NOTCH2NL antibody - C-terminal region - References

Ota T., et al. Nat. Genet. 36:40-45(2004).
Bechtel S., et al. BMC Genomics 8:399-399(2007).
Gregory S.G., et al. Nature 441:315-321(2006).
Duan Z., et al. Mol. Cell. Biol. 24:58-70(2004).