

**Twf1 antibody - C-terminal region**  
**Rabbit Polyclonal Antibody**  
**Catalog # AI13950****Specification**

---

**Twf1 antibody - C-terminal region - Product Information**

|                   |  |
|-------------------|--|
| Application       | WB   |
| Primary Accession | <a href="#">Q5RJR2</a>   |
| Other Accession   | <a href="#">NM_001008521</a> , <a href="#">NP_001008521</a>        |
| Reactivity        | Human, Mouse, Rat, Rabbit, Pig, Horse, Bovine, Guinea Pig, Dog     |
| Predicted         | Human, Mouse, Rat, Rabbit, Chicken, Horse, Bovine, Guinea Pig, Dog |
| Host              | Rabbit   |
| Clonality         | Polyclonal   |
| Calculated MW     | 40kDa KDa  |

**Twf1 antibody - C-terminal region - Additional Information****Gene ID** 315265

|                         |                        |
|-------------------------|------------------------|
| Alias Symbol            | <b>MGC105817, Ptk9</b> |
| <b>Other Names</b>      |                        |
| Twinfilin-1, Twf1, Ptk9 |                        |

**Format**

Liquid. Purified antibody supplied in 1x PBS buffer with 0.09% (w/v) sodium azide and 2% sucrose.

**Reconstitution & Storage**

Add 50 ul of distilled water. Final anti-Twf1 antibody concentration is 1 mg/ml in PBS buffer with 2% sucrose. For longer periods of storage, store at 20°C. Avoid repeat freeze-thaw cycles.

**Precautions**

Twf1 antibody - C-terminal region is for research use only and not for use in diagnostic or therapeutic procedures.

**Twf1 antibody - C-terminal region - Protein Information****Name** Twf1**Synonyms** Ptk9**Function**

Actin-binding protein involved in motile and morphological processes. Inhibits actin polymerization, likely by sequestering G-actin. By capping the barbed ends of filaments, it also regulates motility. Seems to play an important role in clathrin-mediated endocytosis and distribution of endocytic organelles (By similarity).

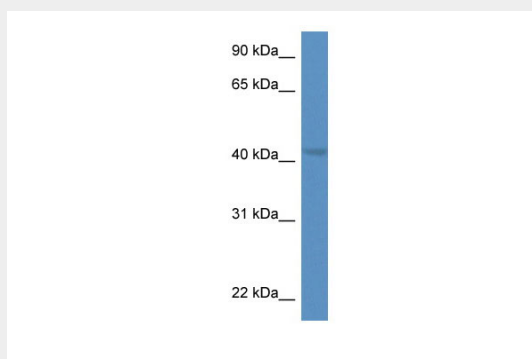
**Cellular Location**

Cytoplasm. Cytoplasm, cytoskeleton. Note=Diffuse cytoplasmic localization with perinuclear and G-actin-rich cortical actin structures sublocalization. Also found at membrane ruffles and cell-cell contacts (By similarity).

**Twf1 antibody - C-terminal region - Protocols**

Provided below are standard protocols that you may find useful for product applications.

- [Western Blot](#)
- [Blocking Peptides](#)
- [Dot Blot](#)
- [Immunohistochemistry](#)
- [Immunofluorescence](#)
- [Immunoprecipitation](#)
- [Flow Cytometry](#)
- [Cell Culture](#)

**Twf1 antibody - C-terminal region - Images**

WB Suggested Anti-Twf1 Antibody Titration: 1.0 µg/ml  
Positive Control: Rat Brain