

Cops4 antibody - N-terminal region
Rabbit Polyclonal Antibody
Catalog # AI14014**Specification**

Cops4 antibody - N-terminal region - Product Information

Application	WB
Primary Accession	Q68FS2
Other Accession	NM_001004275.1 , CAAW13HP01P
Reactivity	Human, Mouse, Rat, Rabbit, Pig, Horse, Bovine, Guinea Pig, Dog
Predicted Host	Human, Mouse, Chicken, Horse, Guinea Pig
Clonality	Rabbit
Calculated MW	Polyclonal 44kDa KDa

Cops4 antibody - N-terminal region - Additional Information**Gene ID** 360915**Alias Symbol** **MGC94896****Other Names**

COP9 signalosome complex subunit 4, SGN4, Signalosome subunit 4, JAB1-containing signalosome subunit 4, Cops4, Csn4

Format

Liquid. Purified antibody supplied in 1x PBS buffer with 0.09% (w/v) sodium azide and 2% sucrose.

Reconstitution & Storage

Add 50 ul of distilled water. Final anti-Cops4 antibody concentration is 1 mg/ml in PBS buffer with 2% sucrose. For longer periods of storage, store at 20°C. Avoid repeat freeze-thaw cycles.

Precautions

Cops4 antibody - N-terminal region is for research use only and not for use in diagnostic or therapeutic procedures.

Cops4 antibody - N-terminal region - Protein Information**Name** Cops4**Synonyms** Csn4**Function**

Component of the COP9 signalosome complex (CSN), a complex involved in various cellular and developmental processes (By similarity). The CSN complex is an essential regulator of the ubiquitin (Ubl) conjugation pathway by mediating the deneddylation of the cullin subunits of SCF-type E3 ligase complexes, leading to decrease the Ubl ligase activity of SCF-type complexes such as SCF, CSA or DDB2 (By similarity). Also involved in the deneddylation of non-cullin subunits

such as STON2 (By similarity). The complex is also involved in phosphorylation of p53/TP53, c-jun/JUN, IkappaBalpha/NFKBIA, ITPK1, IRF8/ICSBP and SNAPIN, possibly via its association with CK2 and PKD kinases (By similarity). CSN-dependent phosphorylation of TP53 and JUN promotes and protects degradation by the Ubl system, respectively (By similarity).

Cellular Location

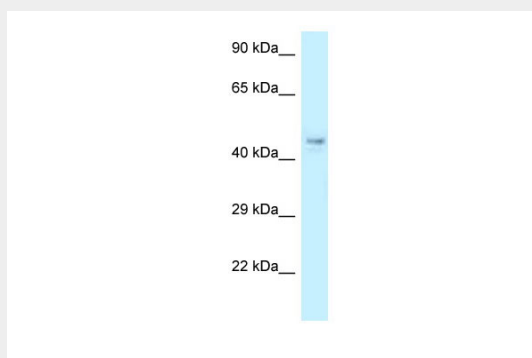
Cytoplasm {ECO:0000250|UniProtKB:Q9BT78}. Nucleus {ECO:0000250|UniProtKB:Q9BT78}.
Cytoplasmic vesicle, secretory vesicle, synaptic vesicle

Cops4 antibody - N-terminal region - Protocols

Provided below are standard protocols that you may find useful for product applications.

- [Western Blot](#)
- [Blocking Peptides](#)
- [Dot Blot](#)
- [Immunohistochemistry](#)
- [Immunofluorescence](#)
- [Immunoprecipitation](#)
- [Flow Cytometry](#)
- [Cell Culture](#)

Cops4 antibody - N-terminal region - Images



WB Suggested Anti-Cops4 Antibody Titration: 1.0 µg/ml
Positive Control: Rat Lung

Cops4 antibody - N-terminal region - References

Granata A., et al. EMBO J. 30:181-193(2011).