

Pnrc2 antibody - N-terminal region
Rabbit Polyclonal Antibody
Catalog # AI14048**Specification**

Pnrc2 antibody - N-terminal region - Product Information

Application	WB
Primary Accession	Q66HE1
Other Accession	NM_001103360 , NP_001096830
Reactivity	Human, Mouse, Rat, Rabbit, Pig, Horse, Bovine, Guinea Pig, Dog
Predicted Host	Human, Mouse, Rat, Chicken, Bovine
Clonality	Rabbit
Calculated MW	Polyclonal 15kDa KDa

Pnrc2 antibody - N-terminal region - Additional Information**Gene ID** 100125373

Alias Symbol	MGC93828, Pnrc2
Other Names	
Proline-rich nuclear receptor coactivator 2, Pnrc2	

Format

Liquid. Purified antibody supplied in 1x PBS buffer with 0.09% (w/v) sodium azide and 2% sucrose.

Reconstitution & Storage

Add 50 ul of distilled water. Final anti-Pnrc2 antibody concentration is 1 mg/ml in PBS buffer with 2% sucrose. For longer periods of storage, store at 20°C. Avoid repeat freeze-thaw cycles.

Precautions

Pnrc2 antibody - N-terminal region is for research use only and not for use in diagnostic or therapeutic procedures.

Pnrc2 antibody - N-terminal region - Protein Information**Name** Pnrc2**Function**

Involved in nonsense-mediated mRNA decay (NMD) by acting as a bridge between the mRNA decapping complex and the NMD machinery. May act by targeting the NMD machinery to the P-body and recruiting the decapping machinery to aberrant mRNAs. Required for UPF1/RENT1 localization to the P-body. Plays a role in glucocorticoid receptor- mediated mRNA degradation by interacting with the glucocorticoid receptor NR3C1 in a ligand-dependent manner when it is bound to the 5' UTR of target mRNAs and recruiting the RNA helicase UPF1 and the mRNA- decapping enzyme DCP1A, leading to RNA decay. Also acts as a nuclear receptor coactivator. May play a role in controlling the energy balance between energy storage and energy expenditure.

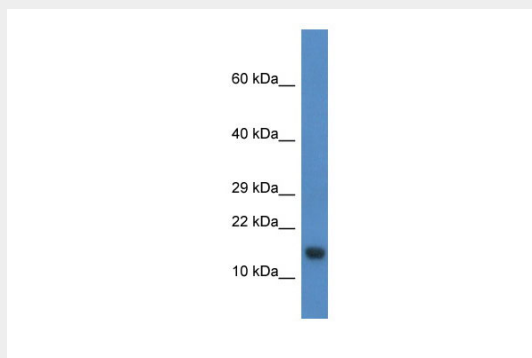
Cellular Location

Nucleus. Cytoplasm, P-body

Pnrc2 antibody - N-terminal region - Protocols

Provided below are standard protocols that you may find useful for product applications.

- [Western Blot](#)
- [Blocking Peptides](#)
- [Dot Blot](#)
- [Immunohistochemistry](#)
- [Immunofluorescence](#)
- [Immunoprecipitation](#)
- [Flow Cytometry](#)
- [Cell Culture](#)

Pnrc2 antibody - N-terminal region - Images

WB Suggested Anti-Pnrc2 Antibody Titration: 1.0 µg/ml
Positive Control: Rat Kidney