

ASXL2 antibody - middle region
Rabbit Polyclonal Antibody
Catalog # AI14067**Specification**

ASXL2 antibody - middle region - Product Information

Application	WB
Primary Accession	Q76L83
Other Accession	NM_018263 , NP_060733
Reactivity	Human, Mouse, Rat, Rabbit, Pig, Horse, Bovine, Guinea Pig, Dog
Predicted	Human, Mouse, Rat, Rabbit, Pig, Horse, Bovine, Guinea Pig, Dog
Host	Rabbit
Clonality	Polyclonal
Calculated MW	154kDa KDa

ASXL2 antibody - middle region - Additional Information**Gene ID** 55252**Alias Symbol** ASXH2, DKFZp686C1968, FLJ10898, KIAA1685**Other Names**

Putative Polycomb group protein ASXL2, Additional sex combs-like protein 2, ASXL2, ASXH2, KIAA1685

Format

Liquid. Purified antibody supplied in 1x PBS buffer with 0.09% (w/v) sodium azide and 2% sucrose.

Reconstitution & Storage

Add 50 ul of distilled water. Final anti-ASXL2 antibody concentration is 1 mg/ml in PBS buffer with 2% sucrose. For longer periods of storage, store at 20°C. Avoid repeat freeze-thaw cycles.

Precautions

ASXL2 antibody - middle region is for research use only and not for use in diagnostic or therapeutic procedures.

ASXL2 antibody - middle region - Protein Information**Name** ASXL2**Synonyms** ASXH2, KIAA1685**Function**

Putative Polycomb group (PcG) protein. PcG proteins act by forming multiprotein complexes, which are required to maintain the transcriptionally repressive state of homeotic genes throughout development. PcG proteins are not required to initiate repression, but to maintain it during later

stages of development. They probably act via methylation of histones, rendering chromatin heritably changed in its expressibility (By similarity). Involved in transcriptional regulation mediated by ligand-bound nuclear hormone receptors, such as peroxisome proliferator-activated receptor gamma (PPARG). Acts as coactivator for PPARG and enhances its adipocyte differentiation- inducing activity; the function seems to involve differential recruitment of acetylated and methylated histone H3.

Cellular Location

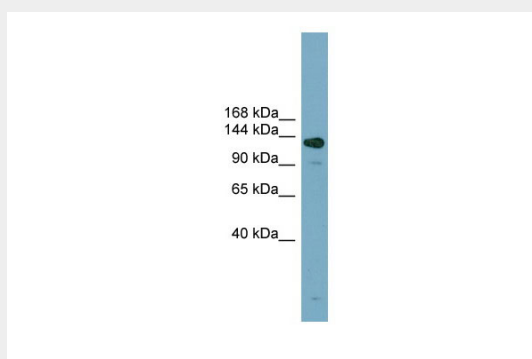
Nucleus.

ASXL2 antibody - middle region - Protocols

Provided below are standard protocols that you may find useful for product applications.

- [Western Blot](#)
- [Blocking Peptides](#)
- [Dot Blot](#)
- [Immunohistochemistry](#)
- [Immunofluorescence](#)
- [Immunoprecipitation](#)
- [Flow Cytometry](#)
- [Cell Culture](#)

ASXL2 antibody - middle region - Images



WB Suggested Anti-ASXL2 Antibody Titration: 0.2-1 µg/ml

Positive Control: NCI-H226 cell lysate

ASXL2 is supported by BioGPS gene expression data to be expressed in NCIH226

ASXL2 antibody - middle region - References

Hosoda F.,et al.Submitted (APR-2002) to the EMBL/GenBank/DDBJ databases.

Nagase T.,et al.DNA Res. 7:347-355(2000).

Ohara O.,et al.Submitted (JAN-2005) to the EMBL/GenBank/DDBJ databases.

Bechtel S.,et al.BMC Genomics 8:399-399(2007).

Hillier L.W.,et al.Nature 434:724-731(2005).