

Tdp1 Antibody - C-terminal region
Rabbit Polyclonal Antibody
Catalog # AI14074**Specification**

Tdp1 Antibody - C-terminal region - Product Information

Application	WB
Primary Accession	Q8BJ37
Reactivity	Human, Mouse, Rat, Rabbit, Pig, Horse, Bovine, Guinea Pig, Dog
Predicted	Human, Mouse, Rat, Rabbit, Pig, Horse, Bovine, Guinea Pig, Dog
Host	Rabbit
Clonality	Polyclonal
Calculated MW	66kDa KDa

Tdp1 Antibody - C-terminal region - Additional Information**Other Names**

Tyrosyl-DNA phosphodiesterase 1, Tyr-DNA phosphodiesterase 1, 3.1.4.-, Protein expressed in male leptotene and zygotene spermatocytes 501, MLZ-501, Tdp1

Format

Liquid. Purified antibody supplied in 1x PBS buffer with 0.09% (w/v) sodium azide and 2% sucrose.

Reconstitution & Storage

Add 50 µl of distilled water. Final Anti-Tdp1 antibody concentration is 1 mg/ml in PBS buffer with 2% sucrose. For longer periods of storage, store at -20°C. Avoid repeat freeze-thaw cycles.

Precautions

Tdp1 Antibody - C-terminal region is for research use only and not for use in diagnostic or therapeutic procedures.

Tdp1 Antibody - C-terminal region - Protein Information**Name** Tdp1**Function**

DNA repair enzyme that can remove a variety of covalent adducts from DNA through hydrolysis of a 3'-phosphodiester bond, giving rise to DNA with a free 3' phosphate. Catalyzes the hydrolysis of dead-end complexes between DNA and the topoisomerase I active site tyrosine residue. Hydrolyzes 3'-phosphoglycolates on protruding 3' ends on DNA double-strand breaks due to DNA damage by radiation and free radicals. Acts on blunt-ended double-strand DNA breaks and on single-stranded DNA. Has low 3'exonuclease activity and can remove a single nucleoside from the 3'end of DNA and RNA molecules with 3'hydroxyl groups. Has no exonuclease activity towards DNA or RNA with a 3'phosphate (By similarity).

Cellular Location

Nucleus. Cytoplasm

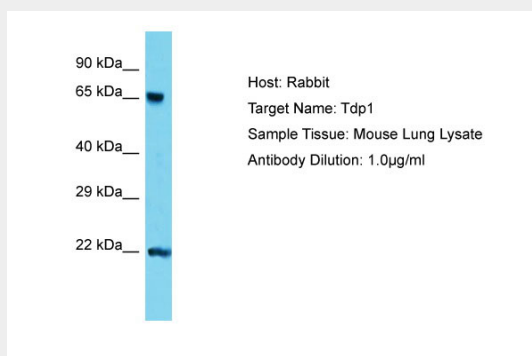
Tissue Location

Ubiquitous.

Tdp1 Antibody - C-terminal region - Protocols

Provided below are standard protocols that you may find useful for product applications.

- [Western Blot](#)
- [Blocking Peptides](#)
- [Dot Blot](#)
- [Immunohistochemistry](#)
- [Immunofluorescence](#)
- [Immunoprecipitation](#)
- [Flow Cytometry](#)
- [Cell Culture](#)

Tdp1 Antibody - C-terminal region - Images

Host: Rabbit
Target Name: Tdp1
Sample Tissue: Mouse Lung lysates
Antibody Dilution: 1.0µg/ml

Tdp1 Antibody - C-terminal region - References

Carninci P., et al. Science 309:1559-1563(2005).
Katyal S., et al. EMBO J. 26:4720-4731(2007).
Hirano R., et al. EMBO J. 26:4732-4743(2007).
Kogo H., et al. J. Hum. Genet. 55:293-299(2010).