

**Grem1 Antibody - middle region**  
**Rabbit Polyclonal Antibody**  
**Catalog # AI14165****Specification**

---

**Grem1 Antibody - middle region - Product Information**

Application	WB
Primary Accession	<a href="#">O35793</a>
Other Accession	<a href="#">NM_019282</a> , <a href="#">NP_062155</a>
Reactivity	Human, Mouse, Rat, Rabbit, Goat, Horse, Bovine, Guinea Pig, Dog
Predicted	Human, Mouse, Rat, Rabbit, Pig, Goat, Horse, Bovine, Guinea Pig, Dog
Host	Rabbit
Clonality	Polyclonal
Calculated MW	20kDa kDa

**Grem1 Antibody - middle region - Additional Information****Gene ID** 50566**Alias Symbol** **Cktsf1b1, drm****Other Names**

Gremlin-1, Cysteine knot superfamily 1, BMP antagonist 1, Down-regulated in Mos-transformed cells protein, Grem1, Cktsf1b1, Drm

**Format**

Liquid. Purified antibody supplied in 1x PBS buffer with 0.09% (w/v) sodium azide and 2% sucrose.

**Reconstitution & Storage**

Add 50 ul of distilled water. Final anti-Grem1 antibody concentration is 1 mg/ml in PBS buffer with 2% sucrose. For longer periods of storage, store at 20°C. Avoid repeat freeze-thaw cycles.

**Precautions**

Grem1 Antibody - middle region is for research use only and not for use in diagnostic or therapeutic procedures.

**Grem1 Antibody - middle region - Protein Information****Name** Grem1**Synonyms** Cktsf1b1, Drm**Function**

Cytokine that may play an important role during carcinogenesis and metanephric kidney organogenesis, as a BMP antagonist required for early limb outgrowth and patterning in maintaining the FGF4-SHH feedback loop. Down-regulates the BMP4 signaling in a dose-dependent manner (By similarity). Antagonist of BMP2; inhibits BMP2-mediated differentiation of osteoblasts

(in vitro) (By similarity). Acts as inhibitor of monocyte chemotaxis (PubMed:<a href="http://www.uniprot.org/citations/15528323" target="\_blank">15528323</a>). Can inhibit the growth or viability of normal cells but not transformed cells when is overexpressed.

**Cellular Location**

Secreted.

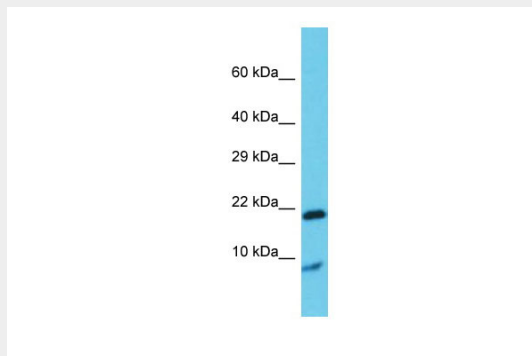
**Tissue Location**

Highly expressed in the brain, kidney, spleen, and testis and weakly expressed in the lung and liver. Predominantly expressed in differentiated cells as neurons in brain, type I cells in lung and goblet cells in intestine.

**Grem1 Antibody - middle region - Protocols**

Provided below are standard protocols that you may find useful for product applications.

- [Western Blot](#)
- [Blocking Peptides](#)
- [Dot Blot](#)
- [Immunohistochemistry](#)
- [Immunofluorescence](#)
- [Immunoprecipitation](#)
- [Flow Cytometry](#)
- [Cell Culture](#)

**Grem1 Antibody - middle region - Images**

Host: Rabbit

Target Name: Grem1

Sample Tissue: Rat Testis lysates

Antibody Dilution: 1.0µg/ml

**Grem1 Antibody - middle region - References**

Topol L.Z., et al. Mol. Cell. Biol. 17:4801-4810(1997).

Chen B., et al. J. Immunol. 173:5914-5917(2004).