

**Ippk antibody - C-terminal region**  
**Rabbit Polyclonal Antibody**  
**Catalog # AI14169****Specification**

---

**Ippk antibody - C-terminal region - Product Information**

Application	WB
Primary Accession	<a href="#">Q6P1C1</a>
Other Accession	<a href="#">NM_199056</a> , <a href="#">NP_951011</a>
Reactivity	Human, Mouse, Rat, Rabbit, Horse, Bovine, Guinea Pig, Dog
Predicted	Human, Mouse, Rat, Rabbit, Pig, Chicken, Horse, Bovine, Dog
Host	Rabbit
Clonality	Polyclonal
Calculated MW	54kDa kDa

**Ippk antibody - C-terminal region - Additional Information****Gene ID** 75678**Alias Symbol** 1810043M15Rik, InsP6**Other Names**

Inositol-pentakisphosphate 2-kinase, 2.7.1.158, Inositol-1, 3, 4, 5, 6-pentakisphosphate 2-kinase, Ins(1, 3, 4, 5, 6)P5 2-kinase, InsP5 2-kinase, Ippk

**Format**

Liquid. Purified antibody supplied in 1x PBS buffer with 0.09% (w/v) sodium azide and 2% sucrose.

**Reconstitution & Storage**

Add 50 ul of distilled water. Final anti-Ippk antibody concentration is 1 mg/ml in PBS buffer with 2% sucrose. For longer periods of storage, store at 20°C. Avoid repeat freeze-thaw cycles.

**Precautions**

Ippk antibody - C-terminal region is for research use only and not for use in diagnostic or therapeutic procedures.

**Ippk antibody - C-terminal region - Protein Information****Name** Ippk**Function**

Phosphorylates Ins(1,3,4,5,6)P5 at position 2 to form Ins(1,2,3,4,5,6)P6 (InsP6 or phytate). InsP6 is involved in many processes such as mRNA export, non-homologous end-joining, endocytosis, ion channel regulation. It also protects cells from TNF-alpha-induced apoptosis.

**Cellular Location**

Cytoplasm. Nucleus.

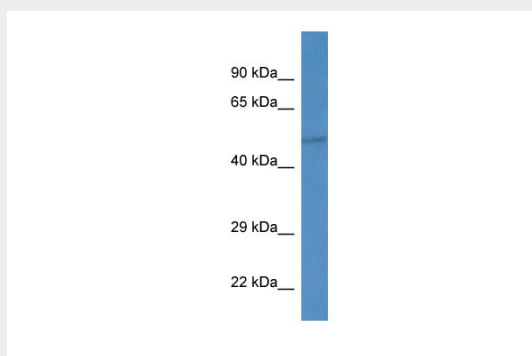
**Tissue Location**

In brain, it is expressed throughout the hippocampus (CA1, CA2, CA3 and dentate gyrus), inner layers of the cerebral cortex, and Purkinje cells of the cerebellum. In heart, it is expressed in cardiomyocytes but not in interstitial cells, blood vessels, or valves. Also expressed in testis

**Ippk antibody - C-terminal region - Protocols**

Provided below are standard protocols that you may find useful for product applications.

- [Western Blot](#)
- [Blocking Peptides](#)
- [Dot Blot](#)
- [Immunohistochemistry](#)
- [Immunofluorescence](#)
- [Immunoprecipitation](#)
- [Flow Cytometry](#)
- [Cell Culture](#)

**Ippk antibody - C-terminal region - Images**

WB Suggested Anti-Ippk Antibody Titration: 1.0 µg/ml  
Positive Control: Mouse Liver

**Ippk antibody - C-terminal region - References**

Carninci P., et al. Science 309:1559-1563(2005).  
Verbsky J., et al. Proc. Natl. Acad. Sci. U.S.A. 102:8448-8453(2005).