

PSMC3 antibody - N-terminal region
Rabbit Polyclonal Antibody
Catalog # AI14258**Specification**

PSMC3 antibody - N-terminal region - Product Information

Application	WB
Primary Accession	P17980
Other Accession	NM_002804 , NP_002795
Reactivity	Human, Mouse, Rat, Rabbit, Pig, Horse, Yeast, Bovine, Guinea Pig, Dog
Predicted	Human, Mouse, Rat, Rabbit, Pig, Chicken, Horse, Bovine, Guinea Pig, Dog
Host	Rabbit
Clonality	Polyclonal
Calculated MW	49kDa kDa

PSMC3 antibody - N-terminal region - Additional Information**Gene ID** 5702**Alias Symbol** **MGC8487, TBP1****Other Names**

26S protease regulatory subunit 6A, 26S proteasome AAA-ATPase subunit RPT5, Proteasome 26S subunit ATPase 3, Proteasome subunit P50, Tat-binding protein 1, TBP-1, PSMC3, TBP1

Format

Liquid. Purified antibody supplied in 1x PBS buffer with 0.09% (w/v) sodium azide and 2% sucrose.

Reconstitution & Storage

Add 50 ul of distilled water. Final anti-PSMC3 antibody concentration is 1 mg/ml in PBS buffer with 2% sucrose. For longer periods of storage, store at 20°C. Avoid repeat freeze-thaw cycles.

Precautions

PSMC3 antibody - N-terminal region is for research use only and not for use in diagnostic or therapeutic procedures.

PSMC3 antibody - N-terminal region - Protein Information**Name** PSMC3**Synonyms** TBP1**Function**

Component of the 26S proteasome, a multiprotein complex involved in the ATP-dependent degradation of ubiquitinated proteins. This complex plays a key role in the maintenance of protein homeostasis by removing misfolded or damaged proteins, which could impair cellular functions, and by removing proteins whose functions are no longer required. Therefore, the proteasome

participates in numerous cellular processes, including cell cycle progression, apoptosis, or DNA damage repair. PSMC3 belongs to the heterohexameric ring of AAA (ATPases associated with diverse cellular activities) proteins that unfolds ubiquitinated target proteins that are concurrently translocated into a proteolytic chamber and degraded into peptides.

Cellular Location

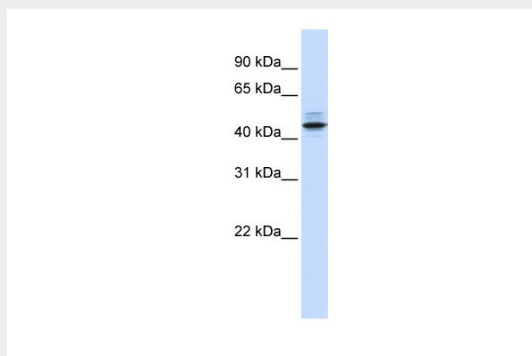
Cytoplasm. Nucleus. Note=Colocalizes with TRIM5 in the cytoplasmic bodies
{ECO:0000250|UniProtKB:O88685}

PSMC3 antibody - N-terminal region - Protocols

Provided below are standard protocols that you may find useful for product applications.

- [Western Blot](#)
- [Blocking Peptides](#)
- [Dot Blot](#)
- [Immunohistochemistry](#)
- [Immunofluorescence](#)
- [Immunoprecipitation](#)
- [Flow Cytometry](#)
- [Cell Culture](#)

PSMC3 antibody - N-terminal region - Images



WB Suggested Anti-PSMC3 Antibody Titration: 0.2-1 µg/ml

ELISA Titer: 1:12500

Positive Control: Human Lung

PSMC3 antibody - N-terminal region - References

Ohana B., et al. Proc. Natl. Acad. Sci. U.S.A. 90:138-142(1993).
Ota T., et al. Nat. Genet. 36:40-45(2004).
Mural R.J., et al. Submitted (SEP-2005) to the EMBL/GenBank/DDBJ databases.
Suzuki Y., et al. Submitted (APR-2005) to the EMBL/GenBank/DDBJ databases.
Nelbock P., et al. Science 248:1650-1653(1990).