

Ccnb1ip1 Antibody - N-terminal region
Rabbit Polyclonal Antibody
Catalog # AI14293**Specification**

Ccnb1ip1 Antibody - N-terminal region - Product Information

Application	WB
Primary Accession	D3Z3K2
Other Accession	NM_001111119 , NP_001104589
Reactivity	Human, Mouse, Rat, Rabbit, Pig, Horse, Bovine, Guinea Pig, Dog
Predicted	Human, Mouse, Rat, Rabbit, Pig, Horse, Bovine, Guinea Pig, Dog
Host	Rabbit
Clonality	Polyclonal
Calculated MW	31kDa kDa

Ccnb1ip1 Antibody - N-terminal region - Additional Information**Gene ID** 239083**Alias Symbol** Gm288, Hei10, mei4**Other Names**

E3 ubiquitin-protein ligase CCNB1IP1, 6.3.2.-, Cyclin-B1-interacting protein 1, Ccnb1ip1, Gm288, Hei10, Mei4

Format

Liquid. Purified antibody supplied in 1x PBS buffer with 0.09% (w/v) sodium azide and 2% sucrose.

Reconstitution & Storage

Add 50 ul of distilled water. Final anti-Ccnb1ip1 antibody concentration is 1 mg/ml in PBS buffer with 2% sucrose. For longer periods of storage, store at 20°C. Avoid repeat freeze-thaw cycles.

Precautions

Ccnb1ip1 Antibody - N-terminal region is for research use only and not for use in diagnostic or therapeutic procedures.

Ccnb1ip1 Antibody - N-terminal region - Protein Information**Name** Ccnb1ip1**Synonyms** Gm288, Hei10, Mei4**Function**

Ubiquitin E3 ligase that acts as a limiting factor for crossing-over during meiosis: required during zygonema to limit the colocalization of RNF212 with MutS-gamma-associated recombination sites and thereby establish early differentiation of crossover and non- crossover sites. Later, it is directed by MutL-gamma to stably accumulate at designated crossover sites. Probably promotes

the dissociation of RNF212 and MutS-gamma to allow the progression of recombination and the implementation of the final steps of crossing over. Modulates cyclin-B levels and participates in the regulation of cell cycle progression through the G2 phase. Overexpression causes delayed entry into mitosis.

Cellular Location

Nucleus. Chromosome. Note=Associates to the synaptonemal complex

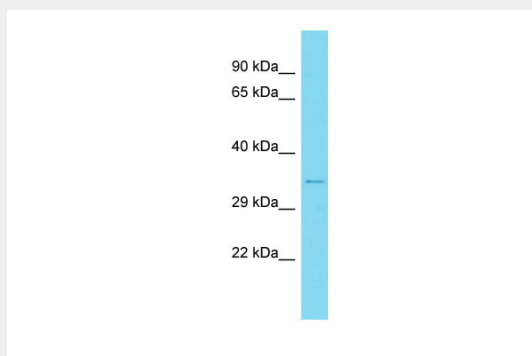
Tissue Location

Expressed predominantly in the testes and 17 day embryos (corresponding to prophase I in females). Weakly or not expressed in other tissues.

Ccnb1ip1 Antibody - N-terminal region - Protocols

Provided below are standard protocols that you may find useful for product applications.

- [Western Blot](#)
- [Blocking Peptides](#)
- [Dot Blot](#)
- [Immunohistochemistry](#)
- [Immunofluorescence](#)
- [Immunoprecipitation](#)
- [Flow Cytometry](#)
- [Cell Culture](#)

Ccnb1ip1 Antibody - N-terminal region - Images

Host: Rabbit

Target Name: Ccnb1ip1

Sample Tissue: Mouse Thymus lysates

Antibody Dilution: 1.0µg/ml

Ccnb1ip1 Antibody - N-terminal region - References

Church D.M.,et al.PLoS Biol. 7:E1000112-E1000112(2009).
Mural R.J.,et al.Submitted (JUL-2005) to the EMBL/GenBank/DDBJ databases.
Ward J.O.,et al.PLoS Genet. 3:E139-E139(2007).
Strong E.R.,et al.Genes (Basel) 1:440-451(2010).
Qiao H.,et al.Nat. Genet. 46:194-199(2014).