

SERPINB6 antibody - middle region
Rabbit Polyclonal Antibody
Catalog # AI14372**Specification**

SERPINB6 antibody - middle region - Product Information

Application	WB
Primary Accession	P35237
Other Accession	NM_004568 , NP_004559
Reactivity	Human, Bovine
Predicted	Human, Bovine
Host	Rabbit
Clonality	Polyclonal
Calculated MW	41kDa KDa

SERPINB6 antibody - middle region - Additional Information**Gene ID** 5269

Alias Symbol **CAP, DKFZp686I04222, MGC111370, MSTP057, PI6, PTI, SPI3, DFNB91**

Other Names

Serpin B6, Cytoplasmic antiproteinase, CAP, Peptidase inhibitor 6, PI-6, Placental thrombin inhibitor, SERPINB6, PI6, PTI

Format

Liquid. Purified antibody supplied in 1x PBS buffer with 0.09% (w/v) sodium azide and 2% sucrose.

Reconstitution & Storage

Add 50 ul of distilled water. Final anti-SERPINB6 antibody concentration is 1 mg/ml in PBS buffer with 2% sucrose. For longer periods of storage, store at 20°C. Avoid repeat freeze-thaw cycles.

Precautions

SERPINB6 antibody - middle region is for research use only and not for use in diagnostic or therapeutic procedures.

SERPINB6 antibody - middle region - Protein Information

Name SERPINB6

Synonyms PI6, PTI

Function

May be involved in the regulation of serine proteinases present in the brain or extravasated from the blood (By similarity). Inhibitor of cathepsin G, kallikrein-8 and thrombin. May play an important role in the inner ear in the protection against leakage of lysosomal content during stress and loss of this protection results in cell death and sensorineural hearing loss.

Cellular Location

Cytoplasm

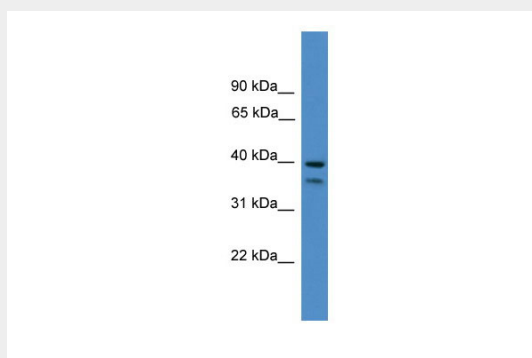
Tissue Location

Expressed in keratinocytes (at protein level). Highest levels in skeletal muscle. Also found in placenta, cardiac muscle, lung, liver, kidney and pancreas. Expressed in the inner ear hair cells. Expressed abundantly by normal mast cells in different tissues and by mast cells in mastocytoma lesions

SERPINB6 antibody - middle region - Protocols

Provided below are standard protocols that you may find useful for product applications.

- [Western Blot](#)
- [Blocking Peptides](#)
- [Dot Blot](#)
- [Immunohistochemistry](#)
- [Immunofluorescence](#)
- [Immunoprecipitation](#)
- [Flow Cytometry](#)
- [Cell Culture](#)

SERPINB6 antibody - middle region - Images

WB Suggested Anti-SERPINB6 Antibody Titration: 0.2-1 µg/ml

ELISA Titer: 1:312500

Positive Control: Human Placenta

SERPINB6 antibody - middle region - References

Coughlin P., et al. Proc. Natl. Acad. Sci. U.S.A. 90:9417-9421(1993).
Morgenstern K.A., et al. Biochemistry 33:3432-3441(1994).
Ota T., et al. Nat. Genet. 36:40-45(2004).
Bechtel S., et al. BMC Genomics 8:399-399(2007).
Mungall A.J., et al. Nature 425:805-811(2003).